

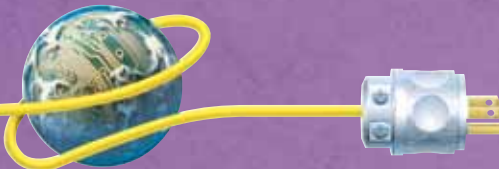
How Leviton Brightens Your Bottom Line

Merchandising that works

Leviton not only supplies you with the finest selection of quality products available, but we help you sell them with the most powerful merchandising programs in our industry. Buy Leviton and you gain prize-winning packaging, dynamic displays, coordinated description-coding, merchandising tools, and powerful promotions to build your profits.

Quality you can count on

Leviton products are of the highest quality. All are UL listed and backed by Leviton's Limited Warranty. So you can depend on customer satisfaction and repeat sales. It's one more way we make fine products easier to sell.



Leviton Manufacturing Co., Inc.
59-25 Little Neck Parkway, Little Neck, NY 11362-2591
Telephone: 1-800-367-5454
Tech Line (8:30AM-6:00PM E.S.T. Monday-Friday): 1-800-824-3005

Leviton Manufacturing of Canada, Ltd.
165 Hymus Boulevard, Pointe Claire, Quebec H9R 1E9
Telephone: 1-800-469-7890 • FAX: 1-800-563-1853

Leviton S.A. de C.V.
General Arista 54-A Col. Argentina, Mexico D.F., C.P. 11270
Telephone: 011-525-386-1131, 011-525-386-2052 • FAX: 011-525-386-1797

Visit Leviton's Web site at : www.leviton.com



Electrical and Electronic Products Carded Program



One-Stop
Shopping
for any size
Electrical
Department

ELECTRICAL AND ELECTRONIC PRODUCTS - FOOD, DRUG AND MASS MARKET



The Company Behind the Product



LEVITON... Building a Connected World

Market Leadership Throughout The Years

Nobody knows electrical wiring devices like Leviton. They've been the foundation of our business since 1906, when our founder, Isador Leviton, marketed his first pull-chain socket. Over the years we've grown to be the nation's leading manufacturer of wiring devices by serving merchants like you with quality products, backed by outstanding service.

Leviton offers over 20,000 quality products combined with great service and marketing support. That's why, when it comes to selling wiring devices and accessories, nobody can do a better job for you than we can.



Catalog Number Index

Cat. No.	Page No.	Cat. No.	Page No.	Cat. No.	Page No.	Cat. No.	Page No.
6	12	6641	35	49567	25	C2413	48
55	11	6643	35	49568	25	C2427	48
61	4	6651	37	49661	26	C2429	48
63	4	6681	34	49666	26	C2447	46
65	4	6682	34	49686	6	C2448	41
69	4	6683	34	49687	6	C2449	46
101	9	6684	34	51012	29	C2450	46
101AN	9	6691	35	51100	29	C2452	47
102	9	6693	35	51101	30	C2455	47
123	10	7090	11	58030	8	C2456	41
125	7	7942	8	58050	8	C5002	41
128	7	8598	22, 39	58060	8	C5003	41
274	5	8599	22	80401	32	C5004	41
423	14	9347	11	80409	32	C5008	42
531	5	9575	15	85000	19	C5009	42
573	14	9716	13	85001	19	C5052	42
692	5	9726	13	85003	19	C5053	42
697	5	9875	13	86000	19	C5055	42
698	5	10083	11	86001	19	C5101	43
699	6	10097	15	86003	19	C5203	42
700	33	12409	8	86009	19	C5229	43
705	33	12410	8	88000	19	C5235	43
706	33	12411	8	88001	19	C5255	40
720	14	12414	29	88003	19	C5256	41
1403	7	12505	40	88009	19	C5259	43
1406	7	12530	24	89001	21	C5402	40
1420	37	12532	23	89201	20	C5405	40
1451	16	12533	23	89203	20	C5451	40
1453	16	12536	24	89209	20	C5856	40
1461	17	12537	24	89301	20, 21	C5811	43
1463	17	12538	24	89303	20, 21	C5812	43
1469	6	12539	24	89309	20, 21	C5851	44
4155	11	12540	24	89501	20	OR320	18
5224	18	12546	37	89503	20	OS451	16
5225	18	12769	23	89509	20	OS453	16
5320	18	12771	23	90572	15	PR150	38
5321	39	12773	12	115CV	9	RPI06-10	36
5410	14	12774	23	115PV	9	RTD01	38
5501	17	12775	23	515CV	10	RTF01	38
5503	17	12776	23	515PV	10	TBI03	37
5671	31	12777	39	A9013	43	X3301	40
5672	31	12779	12	C0229	46	X3324	40
5673	31	12780	12	C0244	45		
5674	31	12794	19	C0245	47		
5675	31	12796	19	C0247	45		
6098	11	12909	26	C0248	45		
6250	37	16509	28	C0249	46		
6510	30	19980	12	C0250	45		
6511	30	26115	34	C0252	47		
6512	30	48566	25	C0253	47		
6515	26	48568	27	C0254	46		
6516	30	48580	27	C0255	47		
6519	30	48581	27	C0261	45		
6602	33	48689	39	C0280	45		
6606	36	49563	26	C2406	48		
6631	36	49566	27	C2407	48		

*A Product Line
Designed For You*

Leviton offers a comprehensive line of UL-Listed products. You won't find a more complete selection anywhere else. Leviton offers all the products your customers want – ranging from night lights to lighting controls and Decora designer devices to television, audio and video accessories. Available in a wide variety of packaging, it's the complete line you need for everyday electrical needs.

Quality Comes First

Leviton's wiring devices and accessories are backed by state-of-the-art research and design, engineering and manufacturing, testing and quality assurance. Our worldwide reputation for quality, precision and reliability and our status as an ISO 9001-certified company, is your assurance of customer satisfaction and repeat sales.

Outstanding Service

Your Leviton representatives are equipped to help you tailor your product selections and design promotions to build profits in your special market. But that's not all.

The nationwide network of Leviton sales and distribution facilities guarantees fast, on-time delivery, supported by a customer service organization that is second to none.



- Plant ● Office
- ▲ Distribution Center

**Leviton Plants,
Distribution Centers
and Offices Worldwide
to Serve You Better**

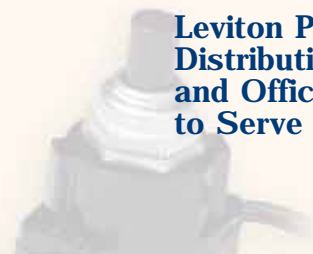




Table of Contents

Audio Wire and Accessories	40
Combination Devices	18
Cord and Canopy Switches	14
Decora Designer Devices	31
Outlets	31
Switches	31
Wallplates	32
Decorative Wallplates	20
Dimmers and Electronics	33
Decora Dimmers	36
Dimmer Knobs	34
Lamp Dimmers	37
Rotary Dimmers	33
Timer Switches	37
Toggle Dimmers	35
Electrical Accessories	23
Fan Speed Control and Motion Activated Light Controls	38
Four Wire Phone Accessories	45
Adapters	45
Cords and Cable	48
Wall Jacks and Wallplates	46
Fuses and Starters	8
GFCIs (Ground Fault Circuit Interrupters)	22
KiddyCop Electrical Safety Devices	39
Lamp Repair and Accessories	11
Night Lights and Guide Lights	25
Automatic ON/OFF	27
Basic	25
Decorative	26
Electroluminescent Guide Lights	28
Specialty	29
Outlets	18
Outlet Adapters	4
Plugs and Connectors	9
Porcelain Lampholders	13
Specialty and Battery Operated Lighting	30
Socket Adapters	7
Switches	16
Video Accessories	41
Wallplates	19





Outlet Adapters



Outlet Adapter

Rated: 600W-125V

- Turns standard parallel outlet into a lamp socket

Cat No.	Description	UPC	Standard Pkg.
61	Brown	07847786001 4	1/5/50
61-I	Ivory	07847785043 5	1/5/30



Polarized Plug-In Triple Outlet Adapter

Rated: 15A-125V (Total Load)

- Converts any polarized outlet to a triple outlet
- Ideal for areas where multiple outlets are needed

Cat No.	Description	UPC	Standard Pkg.
63	Brown	07847786024 3	1/5/50
63-I	Ivory	07847786025 0	1/5/50
63-W	White	07847782528 0	1/5/50



Polarized Trimfit Triple Outlet Adapter

Rated: 15A-125V (Total Load)

- Converts polarized outlet into a triple polarized outlet
- Top surface outlets allow furniture to fit closer to wall
- Ideal for areas where multiple outlets are needed

Cat No.	Description	UPC	Standard Pkg.
65-I	Ivory	07847786026 7	1/5/30
65-W	White	07847782529 7	1/5/30



Polarized Swivel Triple Outlet Adapter

Rated: 15A-125V (Total Load)

- Converts single outlet to a polarized triple outlet
- Folds flat against wall
- Ideal for areas where multiple outlets are needed

Cat. No.	Description	UPC	Standard Pkg.
69-I	Ivory	07847786028 1	1/5/30
69-W	White	07847784072 6	1/5/30



Outlet Adapters

Two-To-Three Grounding Outlet Adapter

Rated: 15A-125V

- For 3-prong grounding plugs
- Converts a 2-prong outlet into a 3-prong grounding outlet when tab is connected to a grounded outlet box

Cat. No.	Description	UPC	Standard Pkg.
274	Gray	07847786030 4	1/5/50
274	Gray, 2-Pack	07847783013 0	2/5/30



Polarized Plug-In Triple Outlet Adapter

Rated: 15A-125V (Total Load)

- Converts single polarized outlet to a triple polarized outlet
- Ideal for areas where multiple outlets are needed

Cat No.	Description	UPC	Standard Pkg.
531	Brown	07847786021 2	1/5/50
531-I	Ivory	07847786022 9	1/5/30
531-W	White	07847782530 3	1/5/30



Grounded Triple Cube Adapter

Rated: 15A-125V (Total Load)

- Converts single grounding outlet into three grounding outlets
- Ideal for areas where multiple outlets are needed

Cat. No.	Description	UPC	Standard Pkg.
692-W	White	07847712238 9	1/5/50
692-I	Ivory	07847713566 2	1/5/50



Grounded Triple Outlet Adapter

Rated: 15A-125V (Total Load)

- For use with 3-prong grounding plugs
- Converts a single grounding outlet into three grounding outlets
- Ideal for areas where multiple outlets are needed

Cat. No.	Description	UPC	Standard Pkg.
697	Brown	07847786012 0	1/5/50
697-I	Ivory	07847786013 7	1/5/30
697-W	White	07847785231 6	1/5/30



Grounding Triple Outlet Adapter

Rated: 15A-125V (Total Load)

- Converts a 2-wire outlet to three 3-wire outlets
- Grounding clip

Cat. No.	Description	UPC	Standard Pkg.
698-I	Ivory	07847778992 6	1/5/30
698-W	White	07847785204 0	1/5/30





Outlet Adapters



Heavy Duty Grounded Outlet Adapter

Rated: 15A-125V (Total Load)

- Converts single grounding outlet into three grounding outlets
- Sturdy vinyl construction for heavy duty applications

Cat. No.	Description	UPC	Standard Pkg.
699	Orange	07847786023 6	1/5/30



Quick Check - Clear Lighted Adapter

Rated: 15A-125V (Total Load)

- Converts single grounding outlet into three grounding outlets
- Quick check power indicator light

Cat. No.	Description	UPC	Standard Pkg.
699-LIT	3 Outlet Lighted	07847718128 7	5/30



Switch Tap

Rated: 13A-120V

- Easy on, easy off contemporary mini-rocker switch
- Impact-resistant thermoplastic construction

Cat. No.	Description	UPC	Standard Pkg.
1469-I	Ivory	07847786888 1	1/4/24
1469-W	White	07847786889 8	1/4/24



Six-Outlet, 3-Wire Grounding Adapter

Rated: 15A-125V AC (Total Load)

- Creates six grounding outlets from one duplex outlet
- Ideal for areas where multiple outlets are needed

Cat. No.	Description	UPC	Standard Pkg.
49686-I	Wheat	07847712106 1	1/5/30
49686-W	White	07847786017 5	1/5/30



Six Outlet, 2-Wire Adapter

Rated: 15A-125V (Total Load)

- Converts duplex outlet into six outlets
- Can be permanently mounted to outlet
- Ideal for areas where multiple outlets are needed

Cat. No.	Description	UPC	Standard Pkg.
49687-I	Ivory	07847785251 4	1/5/30
49687-W	White	07847786019 9	1/5/30



Socket Adapters

Socket-to-Outlet Adapter

Rated: 660W-125V

- Converts any standard lamp socket into an outlet for 2-prong plugs
- Two per card

Cat. No.	Description	UPC	Standard Pkg.
125	White	07847786101 1	2/5/30



Twin Light Socket Adapter

Rated: 660W-125V AC

- Converts a single socket to a double socket

Cat No.	Description	UPC	Standard Pkg.
128	Brown	07847782761 1	1/5/50
128-I	Ivory	07847782762 8	1/4/24



Two-Outlet Socket Adapter

Lampholder Rated: 660W-125V, Outlet Rated: 15A-125V

- Converts a single socket into a socket plus two outlets

Cat No.	Description	UPC	Standard Pkg.
1403	Black	07847786105 9	1/5/50
1403-I	Ivory	07847786106 6	1/5/30
1403-W	White	07847716335 1	1/5/30



Two-Outlet Socket Adapter with Pull Chain

Lampholder Rated: 660W-125W, Outlet Rated: 15A-125V

- Converts a single socket into a socket plus two outlets
- Convenient pull chain controls socket only

Cat. No.	Description	UPC	Standard Pkg.
1406	Black	07847786107 3	1/5/30
1406-I	Ivory	07847786108 0	1/5/30
1406-W	White	07847713436 8	1/5/30





Fuses and Starters

Fluorescent Starters



- For efficient starting and long lamp life
- Two per card

Cat. No.	Description	UPC	Standard Pkg.
12409	FS-2, 15-20 Watt	07847786313 8	2/5/50
12410	FS-4, 30-40 Watt	07847786314 5	2/5/50
12411	FS-12, 32 Watt	07847786058 8	2/5/50

Time Delay Plug Fuse



Rated: 125 Volt AC or DC

- Provides protection during momentary overload
- Fits standard fuse holder
- Three per card

Cat. No.	Description	UPC	Standard Pkg.
7942-15	15 Amp	07847786310 7	3/5/30
7942-20	20 Amp	07847786311 4	3/5/30
7942-30	30 Amp	07847786312 1	3/5/30

Cartridge Fuses



- Fits standard fuse clips
- Amperage rating clearly marked on fuse tube
- Two per card

Cat. No.	Description	UPC	Standard Pkg.
58030-NON	30 Amp	07847786319 0	2/5/30
58050-NON	50 Amp	07847785257 6	2/5/50
58060-NON	60 Amp	07847786323 7	2/5/30



Plugs and Connectors

Light Duty Clamptite® Polarized Plug

Rated: 15A-125V

- Ideal for lamps and small appliances with SPT-1 and SPT-2, 2-wire cords
- One-piece hinged design
- Terminals accept flat wire SPT-1 and SPT-2, 18-16 AWG and round wire 18-16 AWG

Cat. No.	Description	UPC	Standard Pkg.
101-P	Brown	07847702424 9	1/5/30
101-WP	White	07847702425 6	1/5/30
101-EP	Black	07847702427 0	1/5/50



Easy Wire Angle Plug

Rated: 15A-125V

- One piece hinged design
- Keeps cord close to wall
- Accomodates both SPT-1 and SPT-2 wire

Cat. No.	Description	UPC	Standard Pkg.
101AN-E	Black	07847716979 7	1/5/30



Light Duty Clamptite® Polarized Cord Outlet

Rated: 15A-125V

- Mates with 101 series plugs
- One-piece hinged design
- Terminals accept flat wire SPT-1 and SPT-2, 18-16 AWG and round wire 18-16 AWG

Cat No.	Description	UPC	Standard Pkg.
102-P	Brown	07847702441 6	1/5/30
102-WP	White	07847702442 3	1/5/30
102-EP	Black	07847702443 0	1/5/50



Heavy Duty Vinyl Plug

Rated: 15A-125V

- Rugged construction, unmatched quality
- 2-pole, 2-wire

Cat No.	Description	UPC	Standard Pkg.
115PV	Yellow	07847784088 7	1/5/50



Heavy Duty Vinyl Cord Outlet

Rated: 15A-125V

- Rugged construction, unmatched quality
- 2-pole, 2-wire

Cat No.	Description	UPC	Standard Pkg.
115CV	Yellow	07847784097 9	1/5/50





Plugs and Connectors



Easy-To-Wire Plug

Rated: 10A-125V, 125W

- Ideal for lamps and small appliances with 2-wire cords
- Wires without tools or stripping
- Two per card

Cat No.	Description	UPC	Standard Pkg.
123	Brown	07847784202 7	2/5/30
123-W	White	07847778558 4	2/5/30



Vinyl Grounding Plug

Rated: 15A-125V

- Rugged construction, unmatched quality
- 2-pole, 3-wire

Cat No.	Description	UPC	Standard Pkg.
515PV	Yellow	07847784130 3	1/5/50



Vinyl Grounding Cord Outlet

Rated: 15A-125V

- Rugged construction, unmatched quality
- 2-pole, 3-wire

Cat No.	Description	UPC	Standard Pkg.
515CV	Yellow	07847784139 6	1/4/24



Lamp Repair and Accessories

Weather-Resistant Socket

Rated: 660W-250V

- Vinyl exterior, phenolic interior and screw shell with brass shell contact
- Leads molded into boots

Cat. No.	Description	UPC	Standard Pkg.
55	Black	07847785039 8	1/4/24



Lamp Socket w/Bottom Turn Knob

Rated: 660W-250V

- Ideal replacement sockets for pole lamps
- Install in minutes

Cat No.	Description	UPC	Standard Pkg.
4155-51	Nickel	07847784402 1	1/5/100



Lamp Socket w/Push Button

Rated: 660W-250V

- Phenolic interior mechanism with push-through switch
- 1/8 inch threaded bushing in cap

Cat No.	Description	UPC	Standard Pkg.
6098-PG	Gilt	07847784403 8	1/4/24



Turn Knob Lamp Socket for 3-Way Bulbs

Rated: 250W-250V

- Two-circuit knob socket
- LOW-MEDIUM-HIGH-OFF sequence

Cat No.	Description	UPC	Standard Pkg.
7090-PG	Gilt	07847784404 5	1/4/24



Switchless Lamp Socket

Rated: 660W-250V

- Incandescent keyless lampholder

Cat No.	Description	UPC	Standard Pkg.
9347-PG	Polished Gilt	07847785042 8	1/5/30



Turn Knob Lamp Socket

Rated: 250W-250V

- Easy to install

Cat No.	Description	UPC	Standard Pkg.
10083-PG	Gilt	07847784406 9	1/4/24





Lamp Repair and Accessories



Pull Chain Lamp Socket

Rated: 660W-250V

- Replaces pull-chain sockets in pendant lamps, light fixtures

Cat. No.	Description	UPC	Standard Pkg.
19980-PG	Gilt	07847784407 6	1/4/24
19980-N	Nickel	07847785249 1	1/5/50



15ft. Lamp Repair Cords

- 15ft. repair cord for repairing your favorite lamp
- Easy to assemble

Cat. No.	Description	UPC	Standard Pkg.
12773-GLD	Gold – 15 ft.	07847706180 0	1/4/24
12773-W	White – 15 ft.	07847706179 4	1/4/24



Make-A- Lamp Kit

- Everything needed for turning a bottle into a lamp
- Includes socket, cordset, fittings and hardware
- Easy to assemble

Cat. No.	Description	UPC	Standard Pkg.
12779	White – 8 ft. cord	07847706182 4	1/4/24



3-Way Lamp Replacement Kit

- Repair kit includes 3-way socket, 10" harp, 8ft. cord, finial and fittings
- Easy to assemble

Cat. No.	Description	UPC	Standard Pkg.
12779	Brown – 8 ft. cord	0784770618 3	1/4/24



Brass Finish Lamp Knobs

- Knob secures lamp shade firmly onto the harp at the top of the lamp
- Fits all standard harps

Cat. No.	Description	UPC	Standard Pkg.
12780	Brass Finish – 2 Pack	07847706184 8	2/5/30



Three-Ft. Pull Chains

Cat No.	Description	UPC	Standard Pkg.
6	Brass	07847786201 8	1/5/30
6-BAL	Brass with wood ball	07847706634 8	1/5/30



Porcelain Lampholders

Porcelain Pull Chain Ceiling Lampholder w/Outlet

Rated: Lampholder: 660W-125V, Outlet: 15A-125V

- 2-pole, 2-wire polarized outlet
- Fits box size 3-1/4" or 4"

Cat. No.	Description	UPC	Standard Pkg.
9716-C	White Porcelain	07847785237 8	1/0/5



Porcelain Pull Chain Ceiling Lampholder w/Grounding Outlet

Rated: Lampholder: 660W-125V, Outlet: 15A-125V

- 2-pole, 3-wire grounding outlet
- Fits box size 3-1/4" or 4"

Cat No.	Description	UPC	Standard Pkg.
9726-C	White Porcelain	07847785238 5	1/0/5



Porcelain Keyless Lampholder

Rated: 660W-250V

- One-piece keyless top-wired ceiling lampholder
- Fits box size 3-1/4" or 4"

Cat. No.	Description	UPC	Standard Pkg.
9875	White Porcelain	07847785240 8	1/0/5





Cord and Canopy Switches

Miniature Feed-Through Cord Switch



Rated: 3A-125VT, 6A-125V, 3A-250V

- Provides convenient ON/OFF switching
- For use on No. 18-2 SPT-1 lamp cord
- Easy to install; no stripping necessary
- Pins make contact automatically

Cat No.	Description	UPC	Standard Pkg.
423-3K	Brown (For SPT-1)	07847778979 7	1/6/36
423-3KI	Ivory (For SPT-1)	07847784702 2	1/5/50
423-3KW	White (For SPT-1)	07847784703 9	1/6/36

Rotary Two-Circuit Switch



Rated: 3A-125VT, 1A-250V

- LOW-MEDIUM-HIGH-OFF switch for lamps and small appliances
- Provided with leads for speedy installation

Cat. No.	Description	UPC	Standard Pkg.
573	Nickel	07847782057 5	1/4/24

Toggle Switch



Rated: 6A-125V, 3A-125VT, 3A-250V

- Single pole, single throw
- ON/OFF sequence for motor or lighting applications

Cat No.	Description	UPC	Standard Pkg.
720-L	Nickel	07847784601 8	1/4/24

Heavy Duty Feed-Through Cord Switch



Rated: 3A-125V 1/2 HP

- Will accommodate SPT-1, SPT-2 wire or SVT 18/2 round cord
- Heavy duty housing and rocker switch provide convenient ON/OFF switching

Cat No.	Description	UPC	Standard Pkg.
5410	Brown	07847785036 7	1/5/50
5410-I	Ivory	07847782080 3	1/5/30
5410-W	White	07847701795 1	1/5/30



Cord and Canopy Switches

Push Button Switch

Rated: 3A-125V AC-L, 1.5A-250V AC

- Single pole switch
- For lighting applications only
- ON/OFF sequence

Cat No.	Description	UPC	Standard Pkg.
9575-250	Brown	07847783956 0	1/5/50



Pull Chain Switch

Rated: 3A-125V, 1A-250V, 1A-125VT

- For ON/OFF control of fixtures, lamps and small fans

Cat. No.	Description	UPC	Standard Pkg.
10097	Nickel	07847784506 6	1/5/30
10097	Brass	07847782082 7	1/5/50



Rotary Switch

Rated: 6A-125V AC, 3A-250V AC

- Single pole switch
- ON/OFF sequence

Cat No.	Description	UPC	Standard Pkg.
90572-N	Nickel	07847782079 7	1/4/24





Switches

Single-Pole Grounding Quiet Switch



Rated: 15A-120V AC

- Accepts up to No. 12 conductors
- Built for maximum durability and long service
- Equipped with green grounding screw

Cat. No.	Description	UPC	Standard Pkg.
1451-2	Brown	07847782777 2	1/5/50
1451-2I	Ivory	07847782776 5	1/5/50
1451-2W	White	07847782778 9	1/5/50

Heavy Duty Single-Pole Grounding Switch



Rated: 15A-120V AC

- Reinforced base resists abuse
- Strain relief helps capture wire
- Brass terminal screws

Cat. No.	Description	UPC	Standard Pkg.
0S451-I	Ivory	07847709872 1	1/3/18
0S451-W	White	07847709873 8	1/3/18

Three-Way Grounding Quiet Switch



Rated: 15A-120V AC

- Side wire terminals and Quick-wire push-in wire wells
- Controls one fixture from two locations
- Equipped with green grounding screw

Cat. No.	Description	UPC	Standard Pkg.
1453-2	Brown	07847783393 3	1/5/50
1453-2I	Ivory	07847783392 6	1/5/50
1453-2W	White	07847783391 9	1/5/50

Heavy Duty 3-Way Grounding Switch



Rated: 15A-120V AC

- Reinforced base resists abuse
- Strain relief helps capture wire
- Brass terminal screws
- Controls one fixture from two locations

Cat. No.	Description	UPC	Standard Pkg.
0S453-I	Ivory	07847713248 7	1/3/18
0S453-W	White	07847713249 4	1/3/18



Switches

Illuminated Single-Pole Quiet Switch

Rated: 15A- 120V AC

- Toggle glows with switch in OFF position
- Clear toggle and frame coordinate with any color scheme
- Side wire terminals and Quick-wire push-in wire wells

Cat No.	Description	UPC	Standard Pkg.
1461-LHC	Clear	07847782779 6	1/4/24



Illuminated Three-Way Quiet Switch

Rated: 15A-120V AC

- Controls one fixture from two locations
- Clear toggle and frame coordinate with any color scheme
- Side wire terminals and Quick-wire push-in wire wells

Cat. No.	Description	UPC	Standard Pkg.
1463-LHC	Clear	07847782780 2	1/4/24



Illuminated Heavy Duty Single-Pole Toggle Switch

Rated: 15A-120/277V AC

- Built for maximum durability and long service life
- Side wire terminals accept up to No. 12 conductors

Cat No.	Description	UPC	Standard Pkg.
5501-LHI	Ivory	07847782083 4	1/5/50
5501-LHW	White	07847782230 2	1/5/50



Illuminated Heavy Duty 3-Way Toggle Switch

Rated: 15A-120V AC

- Controls one fixture from two locations
- Built for maximum durability and long service

Cat. No.	Description	UPC	Standard Pkg.
5503-LHI	Ivory	07847786043 4	1/5/50
5503-LHW	White	07847786044 1	1/5/50





Outlets & Combination Devices



Grounded Outlet

Rated: 15A-125V AC

- For three-prong plugs
- Equipped with green grounding screw

Cat No.	Description	UPC	Standard Pkg.
5320	Brown	07847782773 4	1/5/50
5320-I	Ivory	07847782774 1	1/5/50
5320-W	White	07847782775 8	1/5/50



Heavy Duty Grounded Outlet

Rated: 15A-125V AC

- Reinforced base resists abuse
- Strain relief helps capture wire
- Brass terminal screws

Cat No.	Description	UPC	Standard Pkg.
OR320-0	Brown	07847709874 5	1/5/50
OR320-I	Ivory	07847709875 2	1/5/50
OR320-W	White	07847709876 9	1/5/50



Two Quiet Switches

Rated: 15A-120/277V AC

- Controls two lights from one location

Cat No.	Description	UPC	Standard Pkg.
5224-I	Ivory	07847782756 7	1/3/18
5224-W	White	07847782757 4	1/3/18



Combination Quiet Switch and Grounded Outlet

Switch Rated: 15A-120V AC 1/2 HP; Outlet Rated: 15A-125V AC

- Quiet, dependable service
- Equipped with green grounding screw

Cat. No.	Description	UPC	Standard Pkg.
5225-I	Ivory	07847782758 1	1/3/18
5225-W	White	07847782759 8	1/3/18



Wallplates

One-Gang Switch Wallplate

- Smooth, easy-to-clean surface
- Color-matched mounting screws included

Cat. No.	Description	UPC	Standard Pkg.
85001	Brown	07847787007 5	1/5/50
86001	Ivory	07847787012 9	1/5/50
88001	White	07847787017 4	1/5/50



Two-Gang Switch Wallplate

- Smooth, easy-to-clean surface
- Color-matched mounting screws included

Cat. No.	Description	UPC	Standard Pkg.
86009	Ivory	07847782771 0	1/5/50
88009	White	07847782772 7	1/5/50



One-Gang Outlet Wallplate

- Smooth, easy-to-clean surface
- Color-matched mounting screws included

Cat. No.	Description	UPC	Standard Pkg.
85003	Brown	07847787008 2	1/5/50
86003	Ivory	07847787013 6	1/5/50
88003	White	07847787018 1	1/5/50



Wallplate Shield

- Protects wallplate from dirt, fingerprints

Cat. No.	Description	UPC	Standard Pkg.
12794	1-Gang – Clear	07847785244 6	1/5/50
12796	2-Gang – Clear	07847785245 3	1/5/50



Wallplate Screws

- Colors match Leviton wallplates
- 10 per card

Cat. No.	Description	UPC	Standard Pkg.
85000-PRT	Brown	07847716981 0	5/25
86000-PRT	Ivory	07847716982 7	5/25
88000-PRT	White	07844716989 6	5/25





Finishing Touch

Decorative Wallplates*



Ceramic Wallplates

- Smooth, easy to clean surfaces
- Color matched mounting screws included

Cat No.	Description	UPC	Standard Pkg.
89501-OBL	Blue Fower	07847712906 7	5/30
89503-OBL	Blue Flower	07847712921 0	5/30
89509-OBL	Blue Flower	07847712923 4	5/30
89501-GRN	Green Ivy	07847712907 4	5/30
89503-GRN	Green Ivy	07847712922 7	5/30
89509-GRN	Green Ivy	07847712924 1	5/30
89501-FLY	Butterfly	07847716788 5	5/30
89503-FLY	Butterfly	07847716799 1	5/30
89509-FLY	Butterfly	07847716789 2	5/30
89501-WFL	Wildflower	07847718613 8	5/30
89503-WFL	Wildflower	07847718615 2	5/30
89509-WFL	Wildflower	07847718616 9	5/30



Antique Brass Finish Wallplates

- Decorative alternative to standard plates
- Oversized for complete coverage
- Matching mounting screws included

Cat No.	Description	UPC	Standard Pkg.
89301-ATB	1-Gang – Brass Finish	07847713192 3	1/5/30
89303-ATB	1-Gang Duplex – Brass Finish	07847713197 8	1/5/30
89309-ATB	2-Gang – Brass Finish	07847713198 5	1/5/30



Genuine Wood Wallplates

- Decorative alternative to standard plates
- Oversized for complete coverage

Cat No.	Description	UPC	Standard Pkg.
89201-OAK	1-Gang – Oak	07847712875 6	1/5/30
89203-OAK	1-Gang Duplex – Oak	07847712908 1	1/5/30
89209-OAK	2-Gang – Oak	07847712894 7	1/5/30
89201-CHE	1-Gang – Cherry	07847712892 3	1/5/30
89203-CHE	1-Gang Duplex – Cherry	07847712893 0	1/5/30
89209-CHE	2-Gang – Cherry	07847712895 4	1/5/30
89201-UNF	1-Gang – Unfinished	07847716796 0	1/5/30
89203-UNF	1-Gang Duplex – Unfinished	07847716797 7	1/5/30
89209-UNF	2-Gang – Unfinished	07847716798 4	1/5/30
89201-WWP	1-Gang – Whitewash	07847721485 5	1/5/30
89203-WWP	1-Gang Duplex – Whitewash	07847721486 2	1/5/30
89209-WWP	2-Gang – Whitewash	07847721487 9	1/5/30



Finishing Touch

Decorative Wallplates*

Satin Chrome Finish Wallplates

- Decorative alternative to standard plates
- Oversized for complete coverage
- Matching mounting screws included

Cat No.	Description	UPC	Standard Pkg.
89301-SSS	1-Gang – Chrome Finish	07847713200 5	1/5/30
89303-SSS	1-Gang Duplex – Chrome Finish	07847713203 6	1/5/30
89309-SSS	2-Gang – Chrome Finish	07847713207 4	1/5/30



White Vinyl Finish Wallplates

- Decorative alternative to standard plates
- Oversized for complete coverage
- Matching mounting screws included

Cat No.	Description	UPC	Standard Pkg.
89301-WH	1-Gang – White	07847713202 9	1/5/30
89303-WH	1-Gang Duplex – White	07847713205 0	1/5/30
89309-WH	2-Gang – White	07847713215 9	1/5/30



Painted Metal Wallplates

- Decorative alternative to standard plates
- Oversized for complete coverage
- Matching mounting screws included

Cat No.	Description	UPC	Standard Pkg.
89001-VIN	One-Gang – Flower Vine	07847712905 0	30
89001-LGT	One-Gang – Lighthouse	07847714742 9	30
89001-FLW	One-Gang – Flower Pot	07847714743 6	30
89001-BIH	One-Gang – Birdhouse	07847714744 3	30
89001-SEA	One-Gang – Seashore	07847714761 0	30
89001-STK	One-Gang – White plate w/Stickers	07847716393 1	30
89001-RST	One-Gang – Rooster	07847718606 0	30
89001-SFL	One-Gang – Sunflower	07847718607 7	30
89001-PLM	One-Gang – Palm Tree	07847718608 4	30
89001-ATB	One-Gang – American Teddy Bear	07847718609 1	30
89001-FGM	One-Gang – Fairy Godmother	07847718610 7	30
89001-LIL	One-Gang – Lilac	07847718611 4	30
89001-VHS	One-Gang – Victorian House	07847718612 1	30



*Leviton carries a full line of decorative wallplates. Please consult Marketing for catalog and listing.



Ground Fault Circuit Interrupters



SmartLock® Ground Fault Circuit Interrupter

Rated: 15A-125V AC through outlets, 20A-125V AC feed through

- Patented SmartLock action prevents reset if miswired or if protection is compromised
- Helps prevent shock hazards due to ground faults
- Matching test and reset buttons
- A must for all wet locations

Cat. No.	Description	UPC	Standard Pkg.
8599-AI	Ivory	07847713614 0	CS1/3/30
8599-AW	White	07847713616 4	CS1/3/30
8599-AA	Almond	07847713617 1	CS1/3/30



SmartLock® Ground Fault Circuit Interrupter with Indicator Light

Rated: 15A-125V through outlets, 20A-125V feed through

- Patented SmartLock action prevents reset if miswired or if protection is compromised
- Helps prevent shock hazards due to ground faults
- Black and Red test and reset buttons
- A must for all wet locations

Cat. No.	Description	UPC	Standard Pkg.
8598-I	Ivory	07847714801 3	CS1/3/30
8598-W	White	07847714802 0	CS1/3/30
8598-A	Almond	07847714803 7	CS1/3/30





Electrical Accessories

Insulated Staples

- Attach 18-2 AWG and smaller wire to baseboards and walls

Cat. No.	Description	UPC	Standard Pkg.
12532	Brown	07847786213 1	1/5/50
12533	White	07847786212 4	1/5/30



Plastic Electrical Tape

- 3/4" x 20 ft.
- For use on electrical splices
- Resists fluids and corrosion

Cat. No.	Description	UPC	Standard Pkg.
12769	Black	07847786208 7	1/5/50



Wire Connectors

- For securing twisted connectors in wall box

Cat No.	Description	UPC	Standard Pkg.
12771	Assorted Wire Connectors	07847785004 6	25/4/24
12774	Small Wire Connectors	07847785001 5	25/5/50
12775	Medium Wire Connectors	07847785002 2	20/5/50
12776	Large Wire Connectors	07847785003 9	10/5/50





Electrical Accessories

Electrical Connectors



- Contains butt splicers, ring terminals, spade terminals & female disconnects
- For solid or stranded wire — AWG #22 to AWG #10

Cat No.	Description	UPC	Standard Pkg
12530-000	Assortment – 40 pcs.	07847709005 3	40/9/54

Plastic Staples



- Fast & easy to install
- Will not rust, crack or deteriorate

Cat No.	Description	UPC	Standard Pack
12536-000	White – 50 pcs.	07847705918 0	50/4/24

Assorted Wire Fasteners



- Fast & easy to install
- Protects insulation
- Will not rust, crack or deteriorate
- 47 piece kit

Cat No.	Description	UPC	Standard Pack
12537-000	Assortment – 47 pcs.	07847705912 8	47/5/30

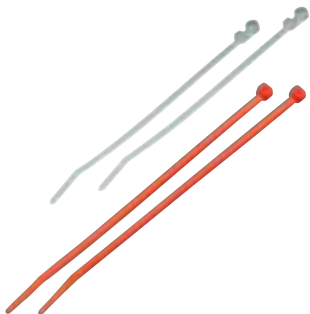
NM Cable Fittings



- Will not rust or deteriorate
- For 14/2, 14/3, 12/2, 12/3 NM cables

Cat No.	Description	UPC	Standard Pack
12538-000	Metal – 4 pcs.	07847705919 7	4/5/30

Cable Ties



- Fastens wires, cable, bundles and hoses
- Extra strength — holds up to 75 lbs
- Withstands temperatures up to 185 degrees F
- Mounting screw hole for securing to surfaces (L00-12539 ONLY)
- Assorted lengths and colors available

Cat No.	Description	UPC	Standard Pack
12539-000	8" White w/ mounting screw hole – 20 pcs.	07847705920 3	20/10/60
12540-000	8" White – 20 pcs.	07847705913 5	20/10/60
12540-100	8" White – 100 pcs.	07847709004 6	100/5/30
12540-ONE	8" Assorted Neon Colors – 20 pcs.	07847713166 4	20/10/60
12540-1NE	8" Assorted Neon Colors – 100 pcs.	07847713172 5	100/5/30
12540-CAN	Assorted size canister – 600 pcs.	07847713176 3	600/1/3
12540-4BL	4" Black – 100 pcs.	07847713360 6	100/5/30
12540-4WH	4" White – 100 pcs.	07847713362 0	100/5/30
12540-8BL	8" Black – 20 pcs.	07847713363 7	20/10/60



Night Lights and Guide Lights

BASIC

Basic Night Light

Rated: 125V, with 4 Watt bulb

- Switch for On/Off action
- Easy to replace bulb

Cat No.	Description	UPC	Standard Pkg.
48566-W	White	07847711273 1	1/5/50
48566-2PW	White – 2 Pack	07847711273 1	2/5/60



Guide Lights

Rated: 120V, with 1/4 Watt bulb

- Cool, energy efficient neon bulb
- Compact design leaves other outlet free
- Two per card

Cat No.	Description	UPC	Standard Pkg.
49567-000	White – 2 Pack	07847711294 6	2/5/50



LED Guide Light

Rated: 120V, 60Hz, .5W

- Long lasting, energy efficient
- State of the art LED, no more bulbs to change

Cat No.	Description	UPC	Standard Pkg.
49568-00W	White Base, Amber Light	07847711698 2	1/3/18
49568-BLU	White Base, Blue Light	07847713646 1	1/3/18





Night Lights and Guide Lights

DECORATIVE

LED Guidelights

Rated: 120V,60Hz, .5W

- Decorative shades that enhance the soft glow of the LED
- Long lasting LED, no more bulbs to change
- Energy efficient
- Adds a decorative touch to any room

Cat. No	Description	UPC	Standard Pkg.
49563-ROS	Rose – Red LED	07847713209 8	1/3/18
49563-BRH	Branch – White LED	07847713210 4	1/3/18
49563-BOA	Sailboat – Blue LED	07847713211 1	1/3/18
49563-LGT	Lighthouse – Red LED	07847713216 6	1/3/18
49563-HTF	Heart w/Flower – Red LED	07847714543 2	1/5/30
49563-SFL	Sunflower – Amber LED	07847714829 7	1/5/30
49563-HOU	House – White LED	07847715157 0	1/5/30
49563-SAM	Star & Moon – Blue LED	07847716140 1	1/3/18

“Hold-it” LED Guide Light

Rated: 120V,60Hz, .5W

- Perfect for holding your favorite pictures, recipe cards, reminder notes and much more
- Long-life LED

Cat. No.	Description	UPC	Standard Pkg.
49563-PHO	“Hold-it” – White LED	07847715697 1	1/3/18

Smiley Face Night Light

Rated: 125V, with 1/4 Watt bulb

- Economical and fun
- Long-life neon bulb

Cat. No.	Description	UPC	Standard Pkg.
6515-SMY	Yellow	07847702697 7	1/5/50





Night Lights and Guide Lights

AUTOMATIC ON/OFF

Automatic ON/OFF Night Light

Rated: 125V-4W bulb

- Fully automatic, turns ON at dusk, OFF at dawn
- Sleek, modern design
- Ideal for any room in the house

Cat No.	Description	UPC	Standard Pkg.
48568-W	White	07847706224 1	1/5/50
48568-2PI	Ivory – 2 Pack	07847706209 8	2/5/60
48568-2PW	White – 2 Pack	07847706210 4	2/5/60
48568-4PK	White – 4 Pack	07847716782 3	4/4/16



LED Automatic ON/OFF Night Light

Rated: 120V, 60Hz, .25W

- Fully automatic, turns ON at dusk, OFF at dawn
- Long lasting LED, no more bulbs to change

Cat. No.	Description	UPC	Standard Pkg.
48580-WHT	White Base – White Light	07847713036 0	1/3/18
48580-GRN	White Base – Green Light	07847713037 7	1/3/18



Motion Activated LED Night Light

Rated: 120 V, 60Hz, .35W

- Turns ON when you enter a room and OFF when you leave
- Long-lasting LED, no more changing bulbs
- Three functions; “ON”, “Motion” or “Photosensor” — three night lights in one

Cat. No.	Description	UPC	Standard Pkg.
48581-PIR	White	07847713040 7	1/3/18



Rotating Spotlight

Rated: 120V, 2.4W

- Rotates 360° to direct light where needed
- Compact, contemporary design leaves other outlet free

Cat No.	Description	UPC	Standard Pkg.
49566-W	White	07847711632 6	1/5/50
49566-2W	White – 2 Pack	07847711633 3	2/5/50





Night Lights and Guide Lights

ELECTROLUMINESCENT GUIDE LIGHTS

Basic Cool Glow Guide Lights



Rated: .03W/115V AC 60 Hz (outlet 12A/115V - san 836 only)

- Cool to the touch, energy efficient
- Utilizes popular electroluminescent technology
- A variety of designs for every room

Cat. No.	Description	UPC	Standard Pkg.
16509-1PK	Basic, White	07847705859 6	1/5/30
16509-2PK	Basic, White – 2 Pack	07847705860 2	2/5/30
16509-PLS	White with Outlets	07847705866 4	1/5/50

Celestial Cool Glow Guide Lights



Rated: .03W/115V AC 60 Hz

- Cool to the touch, energy efficient
- Utilizes popular electroluminescent technology
- A variety of designs adds a heavenly glow to any room in the house

Cat. No.	Description	UPC	Standard Pkg.
16509-STR	Star	07847705862 6	1/5/50
16509-SUN	Sun	07847705863 3	1/5/50
16509-MON	Moon	07847705865 7	1/5/50



Night Lights and Guide Lights

SPECIALTY

Double Outlet and Automatic Night Light

Rated: Outlet 15A-125V, with 1/4 Watt bulb

- Automatic night light and two outlets in one unit
- Light automatically adjusts to room lighting; ON at dusk, OFF at dawn

Cat. No.	Description	UPC	Standard Pkg.
51100	Almond	07847781230 3	1/5/50



Sound Activated Night Light

Rated: 125V, with 4 Watt bulb

- Turns ON in response to sound
- No more fumbling in the dark for switches
- Turns ON only in darkened areas

Cat No.	Description	UPC	Standard Pkg.
51012	White	07847781259 4	1/0/3



Four-Watt Clear Bulbs

Rated: 4W

- For replacement in night lights
- Two per card

Cat No.	Description	UPC	Standard Pkg.
12414	Clear	07847786418 0	2/5/50





Specialty and Battery Operated Lighting



Power Failure Light/Flashlight

- Doubles as an emergency light or a rechargeable flashlight during power failures
- Provides 60 minutes of continuous operation after a power failure
- Acts as a convenient, handheld flashlight as needed

Cat No.	Description	UPC	Standard Pkg.
6510	White	07847795512 3	1/5/50



Plug-In Light Sensor

Rated: Outlet 15A-125V

- Adds convenience and security lighting
- Automatically turns plugged-in lamps ON at dusk, OFF at dawn
- Contemporary design

Cat No.	Description	UPC	Standard Pkg.
51101	White	07847795514 7	1/5/50

BATTERY OPERATED

Fluorescent Battery Operated Lights



- Mounts anywhere—no wiring necessary
- Great for closets, workshops, kitchens
- Requires AA batteries (not included)
- Available in 6" and 12"

Cat No.	Description	UPC	Standard Pkg.
6511-6	6"	07847713087 2	1/4/24
6511-12	12"	07847713089 6	1/3/18



The Anywhere™ Light

- Press once for ON, press again for OFF
- No wiring or outlets required
- Operates with either 4 AA batteries or with DC jack (not included)

Cat No.	Description	UPC	Standard Pkg.
6512-W	White	07847797749 1	1/5/20
6512-W	White w/ Moon and Star Stickers	07847716811 0	1/3/18



Battery Operated Utility Light

- Mounts anywhere, no wiring necessary
- Perfect anywhere extra light is needed
- Requires 3 AA batteries (not included)

Cat No.	Description	UPC	Standard Pkg.
6516-2PK	2 Pack	07847713094 0	2/4/24



Fluorescent Utility Light

- Mounts anywhere, no wiring necessary
- 6W changeable, bright fluorescent bulb
- Ideal wherever extra light is needed
- Requires 4 D batteries (not included)

Cat No.	Description	UPC	Standard Pkg.
6519-10	10"	07847713095 7	1/2/12



SWITCHES

Decora Single Pole Grounding Switch

Rated: 15A-120/277V AC

- Smooth quiet rocker action
- Replaces any standard switch

Cat No.	Description	UPC	Standard Pkg.
5671-2I	Ivory	07847779126 4	1/4/24
5671-2W	White	07847779128 8	1/4/24
5671-2A	Almond	07847779405 0	1/5/50



Decora Illuminated Single Pole Grounding Switch

Rated: 15A-120/277V AC

- Rocker illumination for easy location in the dark
- Replaces any standard switch

Cat. No.	Description	UPC	Standard Pkg.
5672-2I	Ivory	07847779130 1	1/5/50
5672-2W	White	07847779129 5	1/5/50
5672-2A	Almond	07847797915 0	1/5/50



Decora 3-Way Grounding Switch

Rated: 15A-120/277V AC

- Controls one fixture from two different locations

Cat. No.	Description	UPC	Standard Pkg.
5673-2I	Ivory	07847779131 8	1/5/50
5673-2W	White	07847779132 5	1/5/50
5673-2A	Almond	07847779406 7	1/5/50



Decora 3-Way Illuminated Grounding Switch

Rated: 15A-120/277V AC

- Controls one fixture from two different locations
- Rocker illumination for easy location in the dark

Cat. No.	Description	UPC	Standard Pkg.
5674-2I	Ivory	07847779134 9	1/5/50
5674-2W	White	07847779135 6	1/5/50
5674-2A	Almond	07847797916 7	1/5/50



OUTLETS

Decora Grounded Duplex Outlet

Rated: 15A 125V AC

- Replaces any standard duplex outlet

Cat No.	Description	UPC	Standard Pkg.
5675-I	Ivory	07847782216 6	1/4/24
5675-W	White	07847782217 3	1/4/24
5675-A	Almond	07847779407 4	1/5/50





WALLPLATES

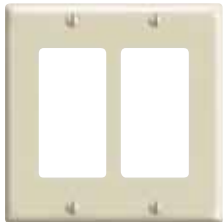
One-Gang Decora Wallplate



- Modern design for use with Decora devices
- Poly-bagged

Cat No.	Description	UPC	Standard Pkg.
80401-I	Ivory	07847715134 1	1/25/250
80401-W	White	07847715126 6	1/25/250
80401-A	Almond	07847779182 0	1/25/250

Two-Gang Decora Wallplate



- Exclusive modern design for use with two Decora devices
- Poly-bagged

Cat No.	Description	UPC	Standard Pkg.
80409-I	Ivory	07847748847 8	1/25/100
80409-W	White	07847748850 8	1/25/100
80409-A	Almond	07847798039 2	1/25/100



Dimmers and Electronics

ROTARY DIMMERS

Basic Rotary Dimmer

Rated: 600W-120V AC

- Replaces any single pole light switch
- Installs easily in standard wall box

Cat. No.	Description	UPC	Standard Pkg.
700-I	Ivory	07847782425 2	1/5/50
700-W	White	07847797937 2	1/5/50



Deluxe Full-Range Dual Knob Rotary Dimmer

Rated: 600W-120V AC

- Replaces any single-pole light switch
- Built-in radio/TV filter
- Ultra-compact, only half as deep as conventional dimmers
- Ivory knob included

Cat No.	Description	UPC	Standard Pkg.
6602-IW	Ivory/White	07847713193 0	1/2/12



Full-Range Dual Knob Push-ON/OFF Dimmer

Rated: 600W-120V AC

- Replaces any single-pole light switch
- Built-in radio/TV filter
- Ultra-compact, only half as deep as conventional dimmers
- Ivory knob included

Cat No.	Description	UPC	Standard Pkg.
6681-IW	Ivory/White	07847713195 4	1/2/12



Illuminated Full-Range Push-ON/OFF Dimmer

Rated: 600W-120V AC

- Illuminated knob is easy to locate in the dark
- Replaces any single pole light switch
- Installs easily in standard wall box

Cat No.	Description	UPC	Standard Pkg.
6682	Clear	07847704812 2	1/5/50





Dimmers and Electronics



Three-Way Full-Range Dual Knob Push-ON/OFF Dimmer

Rated: 600W-120V AC

- Replaces any three-way light switch
- Built-in radio/TV filter
- Ultra-compact, only half as deep as conventional dimmers
- Ivory knob included

Cat. No.	Description	UPC	Standard Pkg.
6683-IW	Ivory/White	07847713196 1	1/2/12



Three-Way Illuminated Full-Range Dual Knob Push-ON/OFF Dimmer

Rated: 600W-120V AC

- Replaces any three-way light switch
- Illuminated knob is easy to locate in the dark
- Ivory knob included

Cat. No.	Description	UPC	Standard Pkg.
6684-IW	Ivory/White	078477715508 0	1/00/12

DIMMER KNOBS

Replacement Dimmer Knobs



Cat. No.	Description	UPC	Standard Pkg.
26115-I	Ivory	07847701810 1	1/10/50
26115-W	White	07847701811 8	1/10/50
26115-CL	Clear	07847701814 9	1/10/50



Dimmers and Electronics

TOGGLE DIMMERS

Toggle Dimmer

Rated: 600W-120V AC

- Positive ON/OFF action
- Built-in Radio/TV filter

Cat. No.	Description	UPC	Standard Pkg.
6641-I	Ivory	07847782418 4	1/2/12
6641-W	White	07847782424 5	1/2/12



Three-Way Toggle Dimmer

Rated: 600W-120V AC

- Positive ON/OFF action
- Built-in Radio/TV filter

Cat. No.	Description	UPC	Standard Pkg.
6643-I	Ivory	07847782420 7	1/5/50
6643-W	White	07847782427 6	1/5/50



Illuminated Toggle Dimmer

Rated: 600W-120V AC

- Positive ON/OFF action
- Lighted toggle glows in dark room

Cat. No.	Description	UPC	Standard Pkg.
6691	Clear	07847782421 4	1/5/50



Three-Way Illuminated Toggle Dimmer

Rated: 600W-120V AC

- Positive ON/OFF action
- Lighted toggle glows in dark room

Cat. No.	Description	UPC	Standard Pkg.
6693	Clear	07847782422 1	1/5/50





Dimmers and Electronics

DECORA DIMMERS

Decora Single Pole or 3-Way Lighted/Unlighted Slide Dimmer



Rated: 600W-120V AC

- Smooth slide bar dimming control
- Compact-solid state circuitry includes radio/TV filter
- Optional Locator Light for easy access in the dark
- Single Pole or 3-Way option

Cat. No.	Description	UPC	Standard Pkg.
6631-IWP	Ivory with wallplate	07847722828 9	2
6631-WWP	White with wallplate	07847722837 3	2

Decora Touch Dimmer



Rated: 600W-120V AC

- Touch once it's ON; touch again, it's OFF
- Touch and hold to brighten and dim
- Compatible with Decora devices
- White and Almond in one SKU

Cat.	Description	UPC	Standard Pkg.
6606-1LM	White/Almond	07847715509 7	1/0/5

Decora Single Pole Or 3-Way Push On/Off Dimmer



Rated: 600W-120V AC

- Rotary dimming control
- Preset feature turns lights on at last level chosen
- Compatible with Decora devices

Cat. No.	Description	UPC	Standard Pkg.
RPI06-10I	Ivory	07847710443 9	1/5
RPI06-10W	White	07847709859 2	1/5
RPI06-10A	Almond	07847709860 8	1/5

Decora Lighted Single Pole Or 3-Way Push On/Off Dimmer



Rated: 600W-120V AC

- Rotary dimming control
- Preset feature turns lights on at last level chosen
- Locator Light for easy access in the dark
- Compatible with Decora devices

Cat. No.	Description	UPC	Standard Pkg.
RPI06-1LI	Ivory	07847710440 8	1/5
RPI06-1LW	White	07847709915 5	1/5
RPI06-1LA	Almond	07847709916 2	1/5



Dimmers and Electronics

LAMP DIMMERS

Full-Range Cord Dimmer

Rated: 200W – 120V AC

- Converts any table or portable lamp into mood setting dimmer lamp
- Easy to install onto parallel lamp cord
- Saves energy, extends bulb life

Cat. No.	Description	UPC	Standard Pkg.
6250-3	Brown	07847702058 6	1/5/50
6250-31	Ivory	07847702059 3	1/5/50



Hi-Lo Cord Dimmer

Rated 200W – 120V AC

- Easy to install onto any parallel lamp cord
- Converts any table or portable lamp into dimmer lamp
- Lo-Hi-Off settings

Cat. No.	Description	UPC	Standard Pkg.
1420	Brown	07847702526 0	1/10/50
1420-I	Ivory	07847702527 7	1/10/50
1420-W	White	07847702528 4	1/10/50



Full-Range Tabletop Dimmer

Rated: 200W – 120V, 60 HZ

- No installation required
- Smooth slide dimming control
- Indicator light for easy location in the dark
- On/Off switch
- Saves energy, extends bulb life

Cat. No.	Description	UPC	Standard Pkg.
TBI03-W	White	07847713310 1	1/2/12



TIMERS

Decora Timer Light Switch

Rated: 500W – 120V AC

- Programs residential loads ON or OFF, hourly up to ten hours
- Convenient programmed switching

Cat. No.	Description	UPC	Standard Pkg.
6651-I	Ivory	07847783202 8	1/5
6651-W	White	07847784931 6	1/5
6651-A	Almond	07847784927 9	1/5





Fan Speed and Motion Activated Light Controls



Decorative Rotary Quiet Fan Speed Control

Rated: 1.5A-120V AC 60 Hz

- Rotary fan control with reduced fan hum
- Compatible with Decora devices

Cat. No.	Description	UPC	Standard Pkg.
RTF01-10I	Ivory	07847710657 0	1/5
RTF01-10W	White	07847709992 6	1/5
RTF01-10A	Almond	07847709993 3	1/5



Decorative Dual Rotary Quiet Fan Speed Control/Dimmer

**Rated: 1.5A-120V AC 60 Hz Fan
300W 120V AC 60 Hz Dimmer**

- Operate a ceiling fan and it's light from any location
- Rotary control with reduced fan hum
- Compatible with Decora devices

Cat. No.	Description	UPC	Standard Pkg.
RTD01-10I	Ivory	07847710659 4	1/5
RTD01-10W	White	07847710260 2	1/5
RTD01-10A	Almond	07847710262 6	1/5



Motion Activated Light Control

Rated: 120V AC 500 Watts, 60 Hz

- Lights go ON Automatically when you enter a room and OFF when you leave
- 150 degree field of view
- Replaces any standard switch

Cat. No.	Description	UPC	Standard Pkg.
PR150-1LW	White	07847712725 4	1/00/3
PR150-1LI	Ivory	07847712724 7	1/00/3
PR150-1LA	Almond	07847712726 1	1/00/3



Electrical Safety Devices

Tamper-Resistant Grounded Outlet

Rated: 15A-125V AC

- Designed to prevent insertion of anything but properly rated plug
- Built-in barrier offers protection for children of all ages

Cat. No.	Description	UPC	Standard Pkg.
5321-I	Ivory	07847778721 2	1/5/50
5321-W	White	07847778722 9	1/5/50



SmartLock® Ground Fault Circuit Interrupter with Indicator Light

Rated: 15A-125V through outlets, 20A-125V feed through

- Patented SmartLock action prevents reset if miswired or if protection is compromised
- Helps prevent shock hazards due to ground faults
- A must for all wet locations

Cat. No.	Description	UPC	Standard Pkg.
8598-I	Ivory	07847714801 3	CS1/3/30
8598-W	White	07847714802 0	CS1/3/30
8598-A	Almond	07847714803 7	CS1/3/30



Outlet Caps

- Seals unused outlets and completely covers live contact openings
- Helps prevent children from inserting objects into slots
- 12 per card

Cat. No.	Description	UPC	Standard Pkg.
12777	Clear	07847781173 3	12/5/30





Audio Wire & Accessories



In-line RCA Coupler

- Connects two RCA plug audio cables together in-line

Cat No.	Description	UPC	Standard Pkg.
C5255	Silver	07847785712 0	2/5/50



RCA Y Adapter, 1 RCA Jack to 2 RCA Plugs

- Splits RCA Audio Cable into two cables when the two cables have a plug on one end and jack on the other end

Cat No.	Description	UPC	Standard Pkg.
C5402	Black	07847785740 3	1/5/50



RCA Y Adapter, 1 RCA Plug to 2 RCA Jacks

- Splits RCA Audio Cable into two cables when new cables have plugs on one end and jacks on the other
- Also splits Audio Signal out of amplifier

Cat No.	Description	UPC	Standard Pkg.
C5405	Black	07847785741 0	1/5/50



Stereo Shielded Cable

- Used to connect audio components such as CD players or cassette decks to audio amplifiers
- 2 RCA plugs to 2 RCA plugs

Cat No.	Description	UPC	Standard Pkg.
C5451-3	3' Cable	07847785743 4	1/5/50
C5451-6	6' Cable	07847785744 1	1/5/50
C5451-12	12' Cable	07847786100 4	1/5/50



AWG Speaker Wire

Cat No.	Description	UPC	Standard Pkg.
X3301-25C	18/2 Clear, 25'	07847786286 5	1/5/50
X3301-50C	18/2 Clear, 50'	07847786287 2	1/0/50
X3324-025	14/2 Clear, 25'	07847786230 8	1/0/25
X3324-50C	14/2 Clear, 50'	07847786231 5	1/0/25



Video Accessories

75 Ohm Wallplate

- Twist-on connections on both sides

Cat. No.	Description	UPC	Standard Pkg.
C5256-I	Ivory/Nickel-plated	07847785717 5	1/5/50
C5256-W	White/Nickel-plated	07847785720 5	1/5/50
C5256-IGO	Ivory/Gold-plated	07847785714 4	1/5/50
C5256-WGO	White/Gold-plated	07847787095 2	1/5/50



Surface-Mount Duplex 75 Ohm Wallplate

- 75 Ohm twist-on connections on both sides
- Can be used as two inputs, one input and one output or two outputs

Cat No.	Description	UPC	Standard Pkg.
C2456-I	Ivory/Gold-plated	07847795075 3	1/5/50
C2456-W	White/Gold-plated	07847795078 4	1/5/50



Decora 75 Ohm Wallplate

- Twist-on connector on both sides
- Decora style wallplate

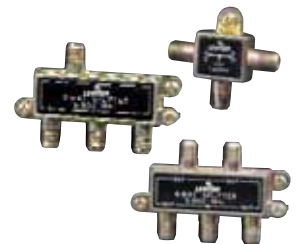
Cat No.	Description	UPC	Standard Pkg.
C2448-I	Ivory	07847785951 3	1/5/50
C2448-W	White	07847785954 4	1/5/50



Splitters

- One 75 Ohm input to either two 75 Ohm outputs three or four 75 Ohm outputs

Cat No.	Description	UPC	Standard Pkg.
C5002	Two-way Nickel-plated	07847785640 6	1/5/50
C5002-OGO	Two-way Gold-plated	07847785642 0	1/5/50
C5003	Three-way	07847785644 4	1/5/50
C5004	Four-way Nickel-plated	07847785647 5	1/5/50
C5004-OGO	Four-way Gold-plated	07847786261 2	1/5/50





Video Accessories

Two-Piece Crimp-On "F" Connector for RG59

- Includes separate crimp rings



Cat No.	Description	UPC	Standard Pkg.
C5009	Nickel-plated	07847786091 5	4/5/50

Twist-On "F" Connector for RG59

- For 75 Ohm coaxial cable



Cat No.	Description	UPC	Standard Pkg.
C5203	Nickel-plated	07847785677 2	2/5/50
C5203-GO	Gold-plated	07847785675 8	2/5/50

Twist-On "F" Connector for RG6

- For 75 Ohm RG6 coaxial cable



Cat No.	Description	UPC	Standard Pkg.
C5008	Nickel-plated	07847785650 5	2/5/50
C5008-GO	Gold-plated	07847795073 9	2/5/50

Indoor Matching Transformer

- Converts 75 Ohm incoming signal into 300 Ohm



Cat No.	Description	UPC	Standard Pkg.
C5052	Nickel-plated	07847785651 2	1/5/50
C5052-GO	Gold-plated	07847785653 6	1/5/50

Outdoor Matching Transformer

- 300 Ohm spade tip connection to 75 Ohm female jack
- Includes weatherproof slip-on boot



Cat No.	Description	UPC	Standard Pkg.
C5053	Transformer	07847785656 7	1/5/50

Push-On Matching Transformer

- 300 Ohm screw-on connection to push-on 75 Ohm male plug



Cat No.	Description	UPC	Standard Pkg.
C5055	Transformer	07847785658 1	1/5/50



Video Accessories

Video Adapter-1 "F" Jack to 1 RCA Plug

- RCA plug to 75 Ohm jack connection

Cat No.	Description	UPC	Standard Pkg.
C5229	Nickel-plated	07847786061 8	1/5/50



75 Ohm Push-On Connector

- 75 Ohm twist-on connection to 75 Ohm push-on connection

Cat No.	Description	UPC	Standard Pkg.
C5235	Nickel-plated	07847785681 9	2/5/50
C5235	Gold-plated	07847785687 1	2/5/50



75 Ohm In-Line Cable Connector

- Connects two cables that terminate in "F" plugs
- Includes mounting nut

Cat No.	Description	UPC	Standard Pkg.
C5259	Nickel-plated	07847785723 6	2/5/50
C5259-OGO	Gold-plated	07847785733 5	2/5/50



75 Ohm A/B Switch

- Two 75 Ohm incoming signals into one 75 Ohm output
- A/B switch selects signal to be viewed on TV or VCR

Cat. No.	Description	UPC	Standard Pkg.
C5101	Switch	07847785661 1	1/5/50



Coaxial Cable Clips

- Nail-in clips hold RG59 and RG6 cables
- Ten per package

Cat No.	Description	UPC	Standard Pkg.
C5811-W	White	07847785763 2	10/5/50
C5812-000	Black	07847786160 8	10/5/50



3+1 Function Remote Control

- Controls up to four separate devices, such as two TVs, a VCR and a cable box
- Includes options for on/off, audio, TV, VCR, cable, satellite, previous channel and all basic VCR functions

Cat No.	Description	UPC	Standard Pkg.
A9013-000	Control	07847717763 1	1/5/30





Video Accessories



RG59 Coaxial Video Cables

- Coaxial cable with a solid-copper center conductor and 60% aluminum braid over 100% aluminum foil second conductor

Cat No.	Description	UPC	Standard Pkg.
C5851-3E	3' – Black	07847785768 7	1/5/50
C5851-3W	3' – White	07847785771 7	1/5/50
C5851-3GO	3' – Black/Gold-plated	07847785769 4	1/5/50
C5851-3GW	3' – White/Gold-plated	07847788142 2	1/5/50
C5851-6E	6' – Black	07847785772 4	1/5/50
C5851-6W	6' – White	07847785776 2	1/5/50
C5851-6GO	6' – Black/Gold-plated	07847785774 8	1/5/50
C5851-6GW	6' – White/Gold-plated	07847788146 0	1/5/50
C5851-12E	12' – Black	07847768265 0	1/5/50
C5851-12W	12' – White	07847786267 4	1/5/50
C5851-12G	12' – Black/Gold-plated	07847786266 7	1/5/50
C5851-12G	12' – White/Gold-plated	07847788140 8	1/5/50
C5851-50G	50' – White/Gold-plated	07847788143 9	1/0/14
C5851-50E	50' – Black	07847785794 6	1/0/14
C5851-50G	50' – Black/Gold-plated	07847785796 0	1/0/14
C5851-50W	50' – White	07847785798 4	1/0/14



4-Wire Phone Accessories

ADAPTERS

2-Outlet Adapter

- Allows a one outlet phone jack to be converted to two outlets
- Plugs directly into phone wallplate

Cat No.	Description	UPC	Standard Pkg.
C0247-I	Ivory	07847785636 9	1/5/50
C0247-W	White	07847785638 3	1/5/50



3-Outlet Adapter

- Converts any one-line modular phone jack into three outlets
- Plugs directly into phone wallplate

Cat No.	Description	UPC	Standard Pkg.
C0248-I	Ivory	07847786079 3	1/5/50
C0248-W	White	07847795222 1	1/5/50



2-Line Adapter

- Converts (one) two-line modular phone jack into three separate lines
- (1) outlet for line 1, (1) outlet for line 2, and (1) outlet for lines 1 and 2
- Plugs directly into phone wallplate

Cat No.	Description	UPC	Standard Pkg.
C0244-000	Ivory	07847786078 6	1/5/50



In-Line Cord Coupler

- Connects two line cords together for increased length of overall cable connection

Cat No.	Description	UPC	Standard Pkg.
C0250-I	Ivory	07847785654 3	1/5/50
C0250-W	White	07847785662 8	1/5/50



5-Outlet Adapter

- Accepts up to five plug-in phones, answering machines and computer modems
- Plugs directly into phone wallplate

Cat No.	Description	UPC	Standard Pkg.
C0261-I	Ivory	07847785727 4	1/5/30



In-Line Duplex Cord Coupler

- Connects line cord from phone wallplate to phone devices
- Female jack in - two female jacks out

Cat No.	Description	UPC	Standard Pkg.
C0280-I	Ivory	07847795223 8	1/5/50
C0280-W	White	07847795224 5	1/5/50





4-Wire Phone Accessories

WALL JACKS AND WALLPLATES

Round Flush-Mount Wallplate



- One piece construction installs easily
- Provides four color-coded, screw-down connections

Cat No.	Description	UPC	Standard Pkg.
C0229-I	Ivory	07847785627 7	1/5/50
C0229-W	White	07847785629 1	1/5/50

Flush-Mount Wallplate



- Single outlet telephone wallplate
- Provides four color-coded screw-down connections

Cat No.	Description	UPC	Standard Pkg.
C0249-I	Ivory	07847785931 5	1/5/50
C0249-W	White	07847785932 2	1/5/50

Duplex Flush-Mount Wallplate



- Wire as one phone line with two jacks, or as two separate phone lines with one line for each jack
- Provides four color-coded screw-down connections

Cat No.	Description	UPC	Standard Pkg.
C0254-I	Ivory	07847785935 3	1/5/50
C0254-W	White	07847785983 4	1/5/50

Decora Duplex Flush-Mount Wallplate



- Wire as one phone line with two jacks, or as two separate phone lines with one line for each jack
- Provides four color-coded screw-down connections
- Decora-style wallplate

Cat No.	Description	UPC	Standard Pkg.
C2447-I	Ivory	07847785909 4	1/5/50
C2447-W	White	07847785915 5	1/5/50

Decora Flush-Mount Wallplate



- Provides four color-coded screw-down connections
- Decora-style wallplate

Cat No.	Description	UPC	Standard Pkg.
C2449-I	Ivory	07847785957 5	1/5/50
C2449-W	White	07847785958 2	1/5/50

Flush-Mount TV/Phone Wallplate



- Connects phone lines and incoming video signals from a single antenna, cable TV or DSS in a single wallplate

Cat No.	Description	UPC	Standard Pkg.
C2450-I	Ivory	07847785960 5	1/5/50
C2450-W	White	07847785962 9	1/5/50



4-Wire Phone Accessories

Surface-Mount Jack with Block and Cover

- Phone cord plugs into front of jack
- Four color-coded punch-down connections

Cat No.	Description	UPC	Standard Pkg.
C0245-I	Ivory	07847785631 4	1/5/50
C0245-W	White	07847785633 8	1/5/50



Surface Mount Mini-Jack

- Compact size jack
- Phone cord plugs into front of jack

Cat No.	Description	UPC	Standard Pkg.
C0252-I	Ivory	07847785680 2	1/5/50
C0252-W	White	07847785934 6	1/5/50



Surface-Mount Jack Cover

- Jack cover only, with 4-wire spade extensions
- Converts old style four-prong jack to modular jack
- Connects to old jack with color-coded spade connections provided

Cat No.	Description	UPC	Standard Pkg.
C0255-I	Ivory	07847785689 5	1/5/50
C0255-W	White	07847785691 8	1/5/50



Surface-Mount Jack

- Phone cord plugs into the side of the jack
- Provides four color-coded screw down connections

Cat. No.	Description	UPC	Standard Pkg.
C2452-I	Ivory	07847785964 3	1/5/50
C2452-W	White	07847786033 5	1/5/50



Surface-Mount Wall Jack with 2 Extra Jacks

- Offers two additional jacks, one on each side
- Ideal for use with answering machines or computer modems
- For all standard-style wall phones
- Four color-coded screw-down connections provided

Cat No.	Description	UPC	Standard Pkg.
C2455-I	Ivory	07847786090 8	1/5/50
C2455-W	White	07847785225 2	1/5/50



Wall Phone Jack

- Accommodates all standard style wall phones
- Four-color coded screw down connections

Cat No.	Description	UPC	Standard Pkg.
C0253-I	Ivory	07847785680 2	1/5/50
C0253-W	White	07847785934 6	1/5/50





4-Wire Phone Accessories

CORDS AND CABLE

Handset Untangler



- Stops handset cords from twisting and kinking

Cat No.	Color/Length	UPC	Standard Pkg.
C2429-C	Handset Untangler – Clear	07847785895 0	1/5/50

Handset Cords



- Designed to retain memory after extended use
- Modular plugs on both ends

Cat No.	Color/Length	UPC	Standard Pkg.
C2407-7I	Ivory – 7'	07847786753 2	1/5/50
C2407-7W	White – 7'	07847786754 9	1/5/50
C2407-7E	Black – 7'	07847786757 0	1/5/50
C2407-15I	Ivory – 15'	07847785809 7	1/5/50
C2407-15W	White – 15'	07847785812 7	1/5/50
C2407-15E	Black – 15'	07847785941 4	1/5/50
C2407-25I	Ivory – 25'	07847785814 1	1/5/50
C2407-25W	White – 25'	07847785985 8	1/5/50
C2407-25E	Black – 25'	07847785918 6	1/5/50

Line Cord



- With 24 gauge stranded copper wire, insulated to meet industry standards
- Modular plugs on both ends

Cat No.	Color/Length	UPC	Standard Pkg.
C2413-7I	Ivory – 7'	07847786087 8	1/5/50
C2413-7W	White – 7'	07847786088 5	1/5/50
C2413-15I	Ivory – 15'	07847785946 9	1/5/50
C2413-15W	White – 15'	07847785947 6	1/5/50
C2413-25I	Ivory – 25'	07847785825 7	1/5/50
C2413-25W	White – 25'	07847785827 1	1/5/50
C2413-50I	Ivory – 50'	07847786085 4	1/5/50
C2413-50W	White – 50'	07847786086 1	1/5/50

25' Line Extension Cord



- Modular plug to a one outlet modular jack

Cat No.	Color/Length	UPC	Standard Pkg.
C2406-25I	Ivory – 25'	07847785787 8	1/5/50
C2406-25W	White – 25'	07847785790 8	1/5/50

25' Duplex Line Extension Cable



- Modular plug to a two-outlet jack

Cat No.	Color/Length	UPC	Standard Pkg.
C2427-25I	Ivory – 25'	07847785858 5	1/5/50
C2427-25W	White – 25'	07847787251 2	1/5/50