

# Universal Ground Clamp Accessories

## Type GH, GWA & GWD - Swivel Types

**Use:**

For use with the universal ground clamps to connect grounding conductors run bare, in armor, or in conduit. Fits all basic ground clamp systems, G-200G through G-1200G and G-200B through G-1200B. See Page MA2.

**Material/Finish:**

Type GH-G - Malleable Iron-Hot Dip Galvanized; Steel Screws Zinc Electroplated  
 Type GH-B - Cast Bronze, Brass Screws  
 Type GWA - Cast Bronze, Silicon Bronze Screws  
 Type GWD - Cast Bronze, Brass Screws

**Third Party Certification:**

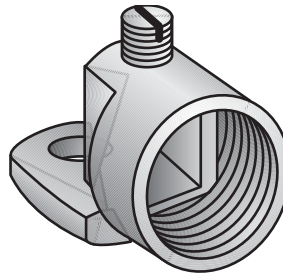


**Applicable Third Party Standards:**

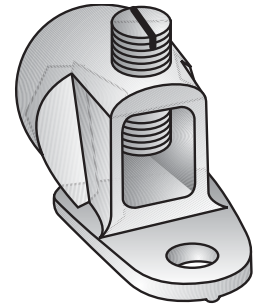
UL Standard: 467  
 Fed. Spec: W-F-406E

**Note:**

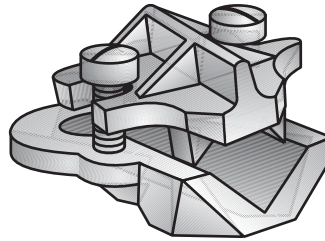
All cast bronze and brass accessories are suitable for direct burial.



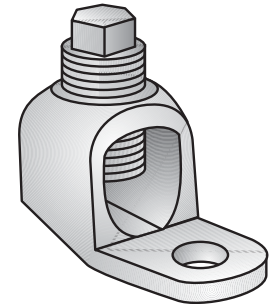
**Type GH-G**  
 Malleable Iron – Hot Dip Galvanized



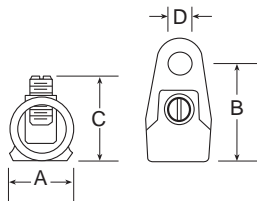
**Type GH-B**  
 Cast Bronze



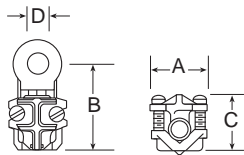
**Type GWA**  
 Cast Bronze



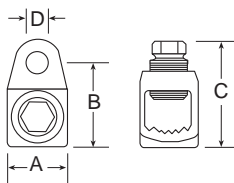
**Type GWD**  
 Cast Bronze



**Type GH**



**Type GWA**



**Type GWD**

GROUND HUBS								
Malleable Iron Catalog Number	Cast Bronze Catalog Number	Hub Trade Size (In.)	Conductor Range AWG/kcmil		Dimensions in Inches			
			Min.	Max.	A	B	C Max.	D
GH-50G	GH-50B	½	8	2	1	1½	1¾	¾
GH-75G	GH-75B	¾	4	2/0	1¼	1¾	1⅞	¾
GH-100G	GH-100B	1	1	250	1½	2¼	2⅞	¾
GH-125G	GH-125B	1¼	4/0	500	1¾	2½	2⅞	¾

ARMORED GROUND WIRE CONNECTOR							
Catalog Number	Conductor Range AWG/kcmil		Max. Armor Dia.	Dimensions in Inches			
	Min.	Max.		A	B	C Max.	D
GWA-04B	8 Sol.	4 Str.	.396	1⅞	1⅞	1⅞	¾

BARE OR INSULATED WIRE DEAD END TERMINAL HUB							
Catalog Number	Conductor Range AWG/kcmil		Dimensions in Inches				
	Min.	Max.	A	B	C Max.	D	
GWD-25B	1	250 Mcm	1⅞	1¼	1¼	¾	
GWD-50B	4/0	500 Mcm	1¾	1¾	2¼	¾	