

# Ark•Gard® Series ENR-GFCI Kits

Cl. I, Div. 1 & 2, Groups B\*, C, D  
Cl. II, Div. 1, Groups E, F, G  
Cl. II, Div. 2, Groups F, G  
Cl. III  
NEMA 3, 7B\*CD, 9EFG, 12

Explosionproof  
Dust-Ignitionproof

2P

## Applications:

ENR-GFCI Kits are used:

- To interrupt a circuit when ground fault is detected on equipment which may be handled by personnel in hazardous locations
- With portable electrical equipment such as tools, lighting systems, compressors and similar devices for personnel protection
- In branch circuits of 15 to 20 amperes at 125 volts AC

In applications such as:

- Refineries
- Chemical Plants
- LNG Facilities
- Wastewater Treatment Facilities
- Drilling and Exploration

## Features:

- Allows for a single part number to be specified, ordered and delivered on-site, significantly reducing the cost of order processing, material handling and misplacement of materials.
- Ark•Gard ENR-GFCI Kit components meet all UL and CSA requirements for ground fault protection in hazardous locations.
- Includes all of the value-added features of the ENR Receptacle.
- The GFCI protects personnel against possible injury due to unwanted ground faults; meets requirements for personnel protection as defined in the National Electrical Code®.
- Field installation is accomplished with standard tools.

## Standard Materials:

ENR Receptacle:

- Receptacle housing, spring door and plug body – die cast copper-free aluminum
- Interiors: receptacle – *Krydon*® fiberglass-reinforced polyester material
- Contacts: receptacle blade – brass; receptacle switch – silver
- Receptacle cover hinge pin and spring – stainless steel
- Receptacle gasket – neoprene
- Back Box – Feraloy® iron alloy

GFS Ground Fault Circuit Interrupter:

- Cover – sand cast copper-free aluminum
- Sealing well – die cast copper-free aluminum
- Pushbuttons and guards – stainless steel
- Shaft seals – neoprene
- Interior: body – polycarbonate; contacts – brass

## Standard Finishes:

ENR Receptacle:

- Feraloy iron alloy – electrogalvanized and aluminum acrylic paint
- Copper-free aluminum – aluminum acrylic paint
- Brass – natural

GFS Ground Fault Circuit Interrupter:

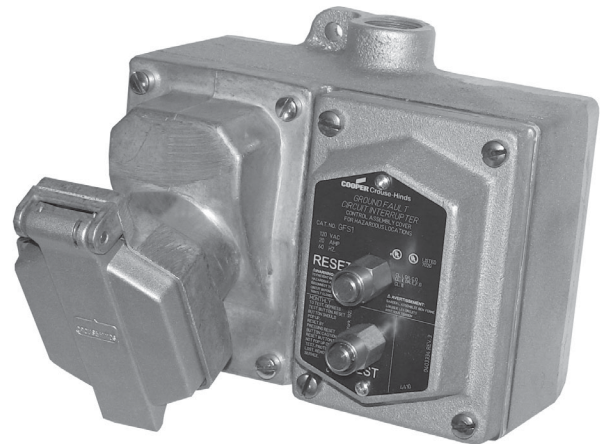
- Copper-free aluminum – aluminum lacquer
- Stainless steel – natural
- Polycarbonate – natural (ivory)
- Brass – natural

## Electrical Rating Ranges:

- 15 and 20 amperes
- 125 VAC
- 5 milliampere trip setting
- Class A per ANSI/UL943

## Certifications and Compliances:

- NEC/CEC Listed Components  
Class I, Division 1 and 2, Groups B\*, C, D  
Class II, Division 1, Groups E, F, G  
Class II, Division 2, Groups F, G  
Class III
- ANSI/UL Standard: 943, 1203
- NEMA/EEMAC 3, 7CD, 9EFG, 12
- CSA Standard: C22.2 No. 30, 144



\*Tested and Eaton's Crouse-Hinds certified for Group B.





2P

# Ark•Gard® Series ENR-GFCI Kits

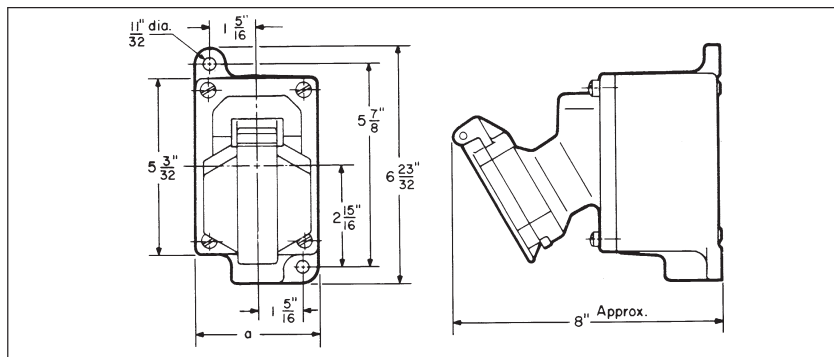
Cl. I, Div. 1 & 2, Groups B\*, C, D  
Cl. II, Div. 1, Groups E, F, G  
Cl. II, Div. 2, Groups F, G  
Cl. III  
NEMA 3, 7B\*CD, 9EFG, 12

Explosionproof  
Dust-Ignitionproof

## Ordering Information:

| Receptacle Rating  | Description  | Hub Size           | Cat. #  | NEMA Config.   | Plug Cat. # | NEMA Config.  |
|--------------------|--------------|--------------------|---|--|-------------|---|
| 15 Amp<br>125 Volt | Dead End     | 1/2"<br>3/4"<br>1" | ENR12151 GFI<br>ENR22151 GFI<br>ENR32151 GFI    | <br>5-15R  | ENP5151     | <br>5-15P  |
|                    | Through Feed | 1/2"<br>3/4"<br>1" | ENRC12151 GFI<br>ENRC22151 GFI<br>ENRC32151 GFI |  |             |   |
| 20 Amp<br>125 Volt | Dead End     | 1/2"<br>3/4"<br>1" | ENR12201 GFI<br>ENR22201 GFI<br>ENR32201 GFI    | <br>5-20R | ENP5201     | <br>5-20P |
|                    | Through Feed | 1/2"<br>3/4"<br>1" | ENRC12201 GFI<br>ENRC22201 GFI<br>ENRC32201 GFI |  |             |   |

## Dimensions In Inches:



\*Tested and Eaton's Crouse-Hinds certified for Group B.

2P