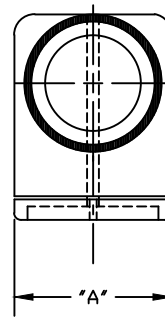
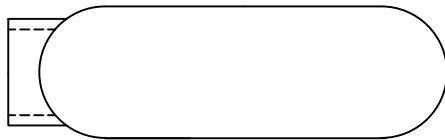
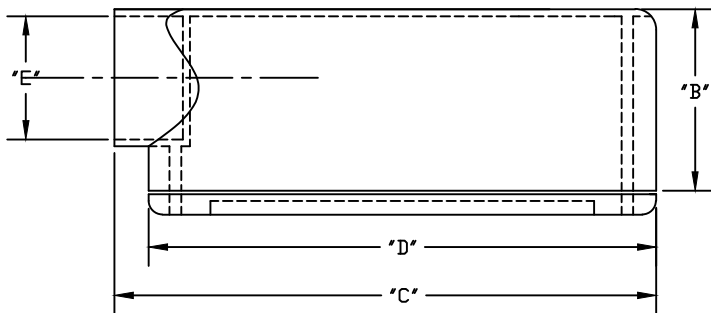


PART NUMBER	SIZE	"A"	"B"	"C"	"D"	"E"	Volume cu. in.	Maximum 3-wire Fill
5133151	1/2	1 5/16"	1 7/16"	4 1/4"	4"	7/8"	4.3	#6 or smaller
5133152	3/4	1 1/2"	1 5/8"	4 15/16"	4 5/8"	1 1/16"	6.5	#6 or smaller
5133153	1	1 3/4"	2"	6"	5 3/8"	1 5/16"	11.8	#6 or smaller
5133154	1-1/4	2 7/16"	2 7/16"	7 5/8"	7 3/16"	1 5/8"	25	XHHW #1
5133155	1-1/2	2 5/8"	2 13/16"	8 9/16"	8"	1 15/16"	36.5	XHHW #2/0
5133156	2	3 1/16"	3 7/16"	9 7/8"	9 1/2"	2 3/8"	63.5	XHHW #4/0
5133157	2-1/2	4 5/8"	4 5/8"	1' 2 15/16"	1' 3/4"	2 7/8"	198	XHHW 500 MCM
5133158	3	4 5/8"	4 5/8"	1' 3"	1' 13/16"	3 1/2"	198	XHHW 500 MCM
5133160	3-1/2	5 5/8"	5 1/2"	1' 4 3/16"	1' 13/16"	4"	305	XHHW 500 MCM
5133159	4	5 5/8"	5 1/2"	1' 3 15/16"	1' 13/16"	4 1/2"	305	XHHW 500 MCM



UL Listed
 UL File # E98429
 UL Category Code QCMZ
 UL Control Number 39N9
 Material is Rigid PVC
 Gasket is Neoprene
 Zinc plated steel screws
 See NEC Article 314 for use



CANTEX
 INC.
 Fort Worth, TEXAS

Type E
Conduit Bodies and Junction Boxes

Drawn By: CD Branch | Date:09/25/07 | Ref.