

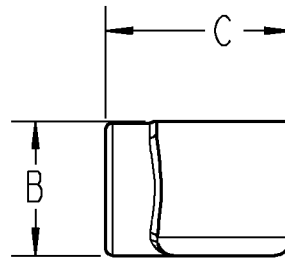
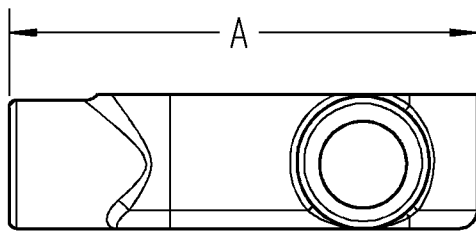
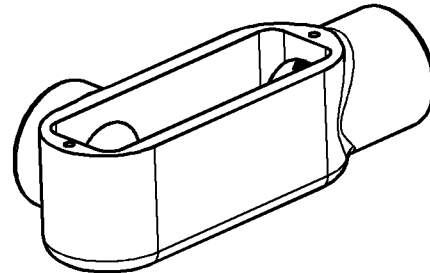
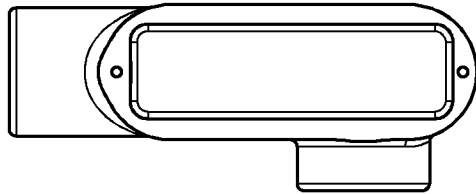


# T&B Conduit Bodies



## NOTES:

1. MATERIAL: MALLEABLE IRON
2. FINISH: ZINC PLATED
3. TWO SCREW STYLE COVER SHOWN



CAT. No.	SIZE	DESCRIPTION	DIM "A"	DIM "B"	DIM "C"
LL50M	1/2"	RIGID LL CONDUIT BODIES	4-11/16"	1-3/8"	2-1/16"
LL75M	3/4"	RIGID LL CONDUIT BODIES	5-3/8"	1-11/16"	2-1/4"
LL100M	1"	RIGID LL CONDUIT BODIES	6-3/16"	1-7/8"	2-5/8"
LL125M	1-1/4"	RIGID LL CONDUIT BODIES	8-1/8"	2-3/4"	2-3/4"
LL150M	1-1/2"	RIGID LL CONDUIT BODIES	8-1/8"	2-13/16"	3-1/2"
LL200M	2"	RIGID LL CONDUIT BODIES	10-1/2"	3-5/16"	4-1/8"
LL250M	2-1/2"	RIGID LL CONDUIT BODIES	13-5/8"	3-7/8"	4-11/16"
LL300M	3"	RIGID LL CONDUIT BODIES	13-7/8"	4-3/4"	5-7/8"
LL350M	3-1/2"	RIGID LL CONDUIT BODIES	16-1/4"	5-5/8"	6-1/8"
LL400M	4"	RIGID LL CONDUIT BODIES	16-1/4"	5-5/8"	6-15/16"

### GENERAL NOTES

1. ALL DIMENSIONS ARE FOR REFERENCE ONLY.
2. DIMENSIONS IN BRACKETS [ ] ARE IN METRIC UNITS.

### REVISIONS

- SEE ERN ( \*\*\*\* )  
FOR APPROVAL SIGNATURES  
& RELEASE DATE.  
PROJECT NO: \*\*\*\*

**Thomas & Betts**  
www.tnb.com

DESCRIPTION:

## RIGID LL CONDUIT BODIES

ORIGINAL PROJECT NO / ( ERN NO )

RD55597 / ( 2006461 )

SHEET NO:

1 OF 1

REV. NO:

-

DRAWING NO:

WSD-000255