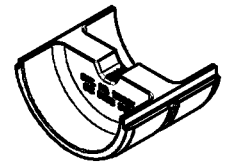


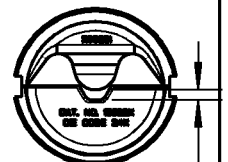
UPPER  
INDENTOR  
CATALOG # 15500X

\*\*Requires  
15500-TB Adapter  
for 15 Ton Heads



LOWER  
DIE HALF  
SEE TABLE  
FOR APPROPRIATE  
HEX FLEX DIE HALF

\*\*Requires  
15500-TB Adapter  
for 15 Ton Heads



G ± .008

15536X	500 FLEX 1100/24	94X	Green	1.454	.576	.437	.536
15506X	500 NAVY	87X	Brown	1.110	.472	.437	.432
15517X	400 FLEX 925/24	80X	N/A	1.100	.453	.437	.413
15512X	350 FLEX	76X	Blue	1.094	.435	.437	.395
15514X	300 FLEX 775/24	71X	Red	1.000	.410	.437	.370
15534X	250 FLEX 650/24	66X	White	.955	.380	.437	.340
15510X	4/0 FLEX 550/24	62X	Yellow	.800	.345	.437	.305
15511X	3/0 FLEX 450/24	54X	Purple	.700	.310	.437	.270
15530X	2/0 FLEX 325/24	50X	Orange	.650	.280	.437	.240
15526X	1/0 FLEX 275/24	45X	Black	.625	.260	.437	.220
15508X	#1 FLEX 225/24	42X	Pink	.550	.238	.437	.198
15513X	#2 FLEX 150-175/24	37X	Green	.523	.226	.437	.186
15528X	#4 FLEX 125/24	33X	Brown	.497	.208	.312	.168
15527X	40-50 NAVY 91/24	29X	Grey	.383	.166	.312	.126
15522X	#6 FLEX 61/24	24X	Blue	.359	.152	.312	.112
15520X	#8 FLEX 37/24	21X	Red	.332	.144	.312	.104
CATALOG NUMBER	WIRE SIZE FLEX CLASS G, H I, K, M	DIE CODE	DIE COLOR	A	B	W	G

NOTES:

1. 15500 SERIES HEX FLEX DIES ARE SOLD SEPARATELY IN HALVES. A COMPLETE DIE SET CONSISTS OF ONE 15500X INDENTOR AND ANY OF THE 155xxX SERIES HEX DIE HALVES. EXAMPLE: 15500X AND 15510X IS FOR CRIMPING 4/0 WELD, 550/24, OR SIMILAR SIZES OF FLEX CONDUCTORS.
2. SEE CONNECTOR SALES DRAWINGS FOR UL LISTED APPLICATIONS.
3. DIE MATERIAL: HIGH GRADE TOOL STEEL
4. 155xxX SERIES DIES TO BE USED WITH THE FOLLOWING HYDRAULIC TOOLS:  
TBM14, TBM14MC, TBM14RH, 13100A, BPLT14BSCR, BPLT14BScri, \*\*TBM15I, \*\*BPLT15BSCR

GENERAL NOTES

1. ALL DIMENSIONS ARE FOR REFERENCE ONLY.
2. DIMENSIONS IN BRACKETS [ ] ARE IN METRIC UNITS.

REVISIONS

- 2 SEE ERN 2012934 FOR APPROVAL SIGNATURES & RELEASE DATE.  
PROJECT NO: TD55790

**Color-Keyed**

**Thomas & Betts**  
www.tnb.com

DESCRIPTION:

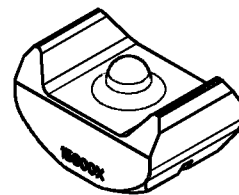
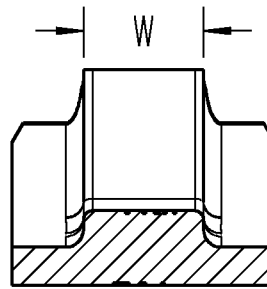
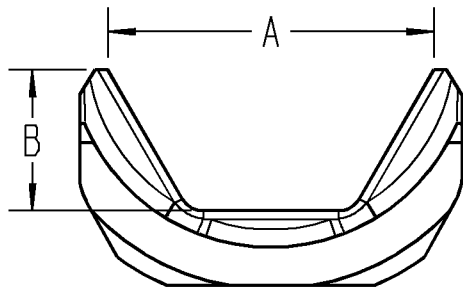
**HEX FLEX DIES  
FOR CRIMPING FLEX CONDUCTORS**

ORIGINAL PROJECT NO / ( ERN NO )  
**CD55821 / ( 2010336 )**

SHEET NO:  
**1 OF 2**

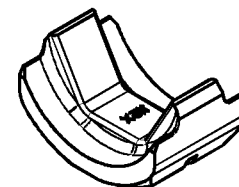
REV. NO:  
**2**

DRAWING NO:  
**WSD-000418**

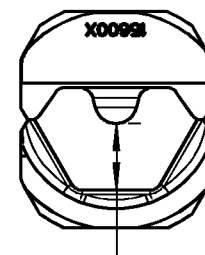


UPPER  
INDENTOR  
CATALOG# 15600X

15604X	1925/24	115X	Yellow	1.696	.735	.625	.695
15608X	800 NAVY	107X	Orange	1.612	.700	.625	.660
15615X	1600/24	106X	Black	1.593	.690	.625	.650
15605X	1325/24	99X	Pink	1.495	.625	.625	.585
15611X	500 FLEX 1100/24	94X	Green	1.454	.576	.437	.536
15687X	500 NAVY	87X	Brown	1.110	.472	.437	.432
15606X	400 FLEX 925/24	80X	N/A	1.100	.453	.437	.413
15676X	350 FLEX	76X	Blue	1.094	.435	.437	.395
15671X	300 FLEX 775/24	71X	Red	1.000	.410	.437	.370
15666X	250 FLEX 650/24	66X	White	.955	.380	.437	.340
15662X	4/0 FLEX 550/24	62X	Yellow	.800	.345	.437	.305
CATALOG NUMBER	WIRE SIZE FLEX CLASS G, H, I, K, M	DIE CODE	DIE COLOR	A	B	W	G



LOWER  
DIE HALF  
SEE TABLE  
FOR APPROPRIATE  
HEX FLEX DIE HALF



G ± .010

NOTES:

- 15600 SERIES HEX FLEX DIES ARE SOLD SEPARATELY IN HALVES. A COMPLETE DIE SET CONSISTS OF ONE 15600X INDENTOR AND ANY OF THE 156xxX SERIES HEX DIE HALVES. EXAMPLE: 15600X AND 15662X IS FOR CRIMPING 4/0 WELD, 550/24, OR SIMILAR SIZED FLEX CONDUCTORS.
- SEE CONNECTOR SALES DRAWINGS FOR UL LISTED APPLICATIONS.
- DIE MATERIAL: HIGH GRADE TOOL STEEL
- 156xxX SERIES DIES TO BE USED WITH THE FOLLOWING HYDRAULIC TOOLS:  
TBM151, BPLT15BSCR

**Color-Keyed**

**Thomas & Betts**  
www.tnb.com

DESCRIPTION: **FULL SIZE HEX FLEX DIES  
FOR CRIMPING FLEX CONDUCTORS**

SHEET NO:  
**2 OF 2**

REV. NO:  
**2**

DRAWING NO:  
**WSD-000418**