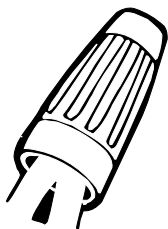


T&B Electricians' Supplies

Wire Connectors and Termination Products

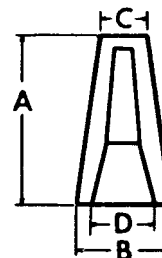


- For high temperature applications over 105°C.
- Three sizes accommodate #18-14 AWG stranded copper.
- 300 Volt rated.
- U.L. Listed and CSA Certified.
- U.L. Standard 486C.

Porcelain Wire Connectors – High Temperature

Cat. No.	Description	Wire* Range	Min.	Max.	Dimensions				Std. Ctn.
					A	B	C	D	
Carton Packed									
10-401	(Hi-1)	18-14	2 #18	1 #18 w/2 #16	1 1/16"	1 3/32"	3/16"	1/4"	100
10-405	(Hi-5)	18-14	2 #18	2 #16 w/2 #18	3/4"	3 1/64"	1 3/64"	5/16"	100
10-477	(Hi-7)	18-14	2 #18	4 #16	2 7/32"	1 7/32"	7/32"	1 3/32"	100
Multi-Carton Packed									
10-411	(Hi-1)	18-14	2 #18	1 #18 w/2 #16	1 1/16"	1 3/32"	3/16"	1/4"	1000
10-415	(Hi-5)	18-14	2 #18	2 #16 w/2 #18	3/4"	3 1/64"	1 3/64"	5/16"	1000
10-417	(Hi-7)	18-14	2 #18	4 #16	2 7/32"	1 7/32"	7/32"	1 3/32"	1000
Bulk Packed									
10-421	(Hi-1)	18-14	2 #18	1 #18 w/2 #16	1 1/16"	1 3/32"	3/16"	1/4"	10000
10-425	(Hi-5)	18-14	2 #18	2 #16 w/2 #18	3/4"	3 1/64"	1 3/64"	5/16"	5000
10-427	(Hi-7)	18-14	2 #18	4 #16	2 7/32"	1 7/32"	7/32"	1 3/32"	5000

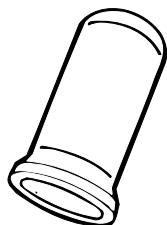
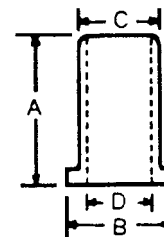
* Stranded only
 U.L. File E-17010
 CSA File LR-6541
 See technical catalog for complete UL & CSA wire combinations.



Crimp Sleeve Wire Connectors

Cat. No.	Description	Wire* Range	Min.	Max.	Dimensions				Std. Ctn.
					A	B	C	D	
Carton Packed									
10-500	(Hi-410)	18-10*	1 #14 w/1 #18	2 #10 w/1 #12	3/8"	1 9/64"	1/4"	1 3/64"	50
10-501	(Hi-411)	18-8	3 #12	4 #10	3 9/64"	2 3/64"	5/16"	1 7/64"	50
Bulk Packed									
10-510	(Hi-410)	18-10*	1 #14 w/1 #18	2 #10 w/1 #12	3/8"	1 9/64"	1/4"	1 3/64"	1000
10-511	(Hi-411)	18-8	3 #12	4 #10	3 9/64"	2 3/64"	5/16"	1 7/64"	1000

* Stranded only
 Installation tool 18-500
 U.L. File E-17010
 CSA File LR-6541
 See technical catalog for complete UL & CSA wire combinations.



- Zinc plated, chromate treated steel.
- Two sizes accommodate #18-8 AWG copper.
- U.L. Listed and CSA Certified.