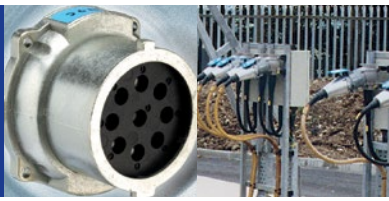


DN9c



DN9c Multipin – 20A Plugs & Receptacles

Ratings

- Voltage**
50 VAC or 480 VAC Max / 130 VDC+
* For DC order 480V model.
Not CSA listed.
- Amperage Rating**
20A Current Interrupting
- Horsepower Ratings**

120V	1Ø	1/3 hp
240V	1Ø	1 hp
208V	3Ø	2 hp
240V	3Ø	3 hp
480V	3Ø	5 hp
- Environmental Ratings**
IP54/IP55
- Temperature Range**
Min -40°F / Max 140°F
See pg 234 for temps below -15°F.
- Wiring Capacity**
Min 16 AWG Max 10 AWG
- Applicable Standards**
CSA 182.01

For DN9c dimensions, see pgs 91-92

Receptacle (female)



Don't forget to add installation accessories to your order



Inlet (male)



North American Configurations

Voltage	Polarity	Part # Metal
50V	6P	17-14060
50V	7P	17-14070
50V	8P	17-14080
50V	9P	17-14090
480V	5P+G	17-14051
480V	6P+G	17-14061
480V	7P+G	17-14071
480V	8P+G	17-14081

Voltage	Polarity	Part # Metal
50V	6P	17-18060
50V	7P	17-18070
50V	8P	17-18080
50V	9P	17-18090
480V	5P+G	17-18051
480V	6P+G	17-18061
480V	7P+G	17-18071
480V	8P+G	17-18081

For international configurations and ratings (IEC,CE) visit meltric.com/international-catalog or contact customer service at 800.433.7642.

Main Options



Mushroom Pawl



Padlock Pawl



Self-Ejecting Devices

* Requires straight insertion receptacle or inlet and self-ejecting plug or connector

Receptacle Options

Part

Straight Insertion	Recept # - A188
Self-Ejecting Connector Release	Recept # - 348-A188
HP Watertightness (high pressure)	Recept # - HP
Mushroom Pawl	Recept # - 375
Locking Mushroom Pawl	Recept # - 845
Padlock Pawl	Recept # - 843
Padlockable Mushroom Pawl	Recept # - 375- 843
Closed Lid Configuration	Recept # - NC

Inlet Options

Part

Straight Insertion	Inlet # - A188
--------------------	----------------

DN9c Order Example:

To order Closed Lid Configuration on a receptacle add **-NC** to the part numbers.

DN9c Receptacle 9P=17-14090-**NC**

Appropriate accessory part numbers must also be included on the order.



See pgs 211-220 for detailed information on these options

Installation Accessories

Handles



Not Type 3R

Makes connector closures easier

NPT	Poly Handle	Metal Handle
1/2"	3PH12	3H12
3/4"	3PH34	3H34
1"	3PH1	3H1
1 1/4"	3PH114	3H114

Cable Range	Nylon Handle	Neoprene Handle	Poly Handle w/Clamp & Bushing	Poly Handle w/built in Draw Grips
.32 - 1.25	-	-	-	FH311-473
.38 - 1.12	-	31-311	-	-
.39 - 1.18	FH311	-	-	-
.750 - .875	-	-	3PM514	-
.875 - 1.000	-	-	3PM516	-
1.000 - 1.125	-	-	3PM518	-
1.125 - 1.250	-	-	3PM520	-
1.250 - 1.375	-	-	3PM522	-

- Notes:**
- Finger draw plates are recommended for easier connector closure on cord to cord assemblies.
 - For available cord grips, see pgs 169-170.

Angles



Metal 30° Angle	Metal 70° Angle	Metal Angle FS/FD Box 30°	Metal Straight Adapter
MA3	89-3A027	MAFS3*	MS3

* MAFS3 base measures approximately 4.2" x 2.7". Due to the variation in sizes of FS boxes, please verify that your FS box matches our dimensions, if not call Customer Service for other solutions.

NPT Guidelines

Cable Range	NPT
.312 - .625	1/2"
.438 - .812	3/4"
.660 - 1.000	1"
.875 - 1.375	1 1/4"

NPT sizes are determined by the cable diameter and third party cord grip.

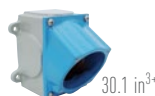
Accessory Spotlight

Receptacle Locking Pin



A 5/16" locking pin can be ordered to securely lockout receptacles that include the 'padlockable pawl' option. The user can also utilize a lock with a 5/16" shank. Locks with smaller shanks will NOT securely lockout a receptacle pawl.

Junction Boxes



30.1 in³⁺

NPT	Metal Box	Metal Box Metal Angle 30°
1/2"	MB312	39-3A053-080-12
3/4"	MB334	39-3A053-080-34
1"	MB31	39-3A053-080-1
1 1/4"	MB3114	39-3A053-080-114

+ Interior volume with receptacle installed.

Miscellaneous Accessories



* Set of Two (2)



For Male Devices Only



Finger Drawplates	Protective Neoprene Cap	Cord Grip with Mesh	Receptacle ⁺ Lockout Pin
FDP3	DN16R	see pgs 169-170	LP-843

- * Recommended for cord to cord assembly applications, for easier connector closure.
 + Requires Padlockable Pawl option (-843) on receptacle.

Order Example

A typical order should include an inlet part number, a receptacle part number **AND** the matching handles, angles or other required accessories.

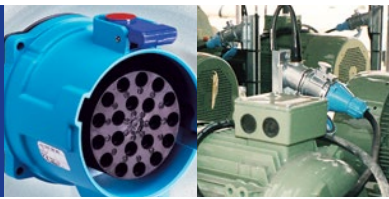


Male Inlet with Handle (Plug)
17-18060 + FH311



Female Receptacle with Angle Adapter
17-14060 + MA3

DN20c



DN20c Multipin – 20A Plugs & Receptacles

Ratings

- Voltage**
50 VAC or 480 VAC Max/130 VDC*
* For DC order 480V model.
Not CSA listed.
- Amperage Rating**
20A/15A Current Interrupting*
* The amperage rating is 15A when more than 12 contacts are used for power circuits (not control).
- Horsepower Ratings**

120V	1Ø	1/6 hp
240V	1Ø	1/2 hp
208V	3Ø	1 hp
240V	3Ø	1 hp
480V	3Ø	3 hp
- Environmental Ratings**
IP54/IP55
- Temperature Range**
Min -40°F/Max 140°F
See pg 234 for temps below -15°F.
- Wiring Capacity**
Min 16 AWG Max 10 AWG
- Applicable Standards**
CSA 182.01

For DN20c dimensions, see pgs 91-92

Receptacle (female)



Don't forget to add installation accessories to your order

Inlet (male)



* The amperage rating is 15A when more than 12 contacts are used for power circuits (not control).

North American Configurations

Voltage	Polarity	Part # Metal
50V	10P	17-64100
50V	11P	17-64110
50V	12P	17-64120
50V	13P	17-64130*
50V	14P	17-64140*
50V	15P	17-64150*
50V	16P	17-64160*
50V	17P	17-64170*
50V	18P	17-64180*
50V	19P	17-64190*
50V	20P	17-64200*
480V	9P+G	17-64091
480V	10P+G	17-64101
480V	11P+G	17-64111
480V	12P+G	17-64121
480V	13P+G	17-64131*
480V	14P+G	17-64141*
480V	15P+G	17-64151*
480V	16P+G	17-64161*
480V	17P+G	17-64171*
480V	18P+G	17-64181*
480V	19P+G	17-64191*

Voltage	Polarity	Part # Metal
50V	10P	17-68100
50V	11P	17-68110
50V	12P	17-68120
50V	13P	17-68130*
50V	14P	17-68140*
50V	15P	17-68150*
50V	16P	17-68160*
50V	17P	17-68170*
50V	18P	17-68180*
50V	19P	17-68190*
50V	20P	17-68200*
480V	9P+G	17-68091
480V	10P+G	17-68101
480V	11P+G	17-68111
480V	12P+G	17-68121
480V	13P+G	17-68131*
480V	14P+G	17-68141*
480V	15P+G	17-68151*
480V	16P+G	17-68161*
480V	17P+G	17-68171*
480V	18P+G	17-68181*
480V	19P+G	17-68191*

For international configurations and ratings (IEC,CE) visit meltric.com/international-catalog or contact customer service at 800.433.7642.

Main Options



Mushroom Pawl



Self-Ejecting Devices

* Requires straight insertion receptacle or inlet and self-ejecting plug or connector



See pgs 211-220 for detailed information on these options

Receptacle Options

Part

Straight Insertion	Recept # - A188
Self-Ejecting Connector Release	Recept # - 348-A188
HP Watertightness (high pressure)	Recept # - HP
Mushroom Pawl	Recept # - 375
Locking Mushroom Pawl	Recept # - 845
Padlock Pawl	Recept # - 843
Padlockable Mushroom Pawl	Recept # - 375-843
180° Opening Lid	Recept # - 180
Closed Lid Configuration	Recept # - NC

Inlet Options

Part

Self-Ejecting Plug Release	Inlet # - 338-A188
Straight Insertion	Inlet # - A188

DN20c Order Example:

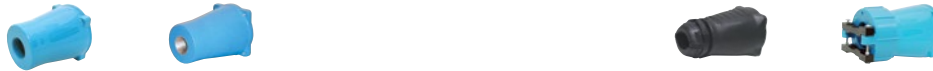
To order Closed Lid Configuration on a receptacle add **-NC** to the receptacle part numbers.

DN20c Receptacle 19P=17-64190-**NC**

Appropriate accessory part numbers must also be included on the order.

Installation Accessories

Handles



NPT	Poly Handle	Metal Handle	Cable Range	Santoprene™ Handle	Poly Handle w/Clamp & Bushing
3/4"	9PH34	9H34	.70 - 1.00	65-9A013-D25	-
1"	9PH1	9H1	1.00 - 1.375	65-9A013-D35	-
1 1/4"	9PH114	9H114	1.250 - 1.375	-	9PM622
1 1/2"	9PH112	9H112	1.375 - 1.750	65-9A013-D45	-
2"	9PH2	9H2	1.438 - 1.562	-	9PM625
			1.562 - 1.688	-	9PM627
			1.688 - 1.812	-	9PM629

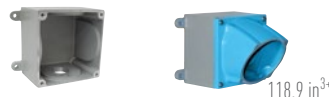
Notes: • For available cord grips, see pgs 169-170.

Angles



Metal 30° Angle	Metal 70° Angle	Metal Straight Adapter
MA10	89-9A027	MS10

Junction Boxes



NPT	Metal Box	Metal Box Metal Angle 30°
1 1/4"	MB10114	39-9A053-080-114
1 1/2"	MB10112	39-9A053-080-112
2"	MB102	39-9A053-080-2
2 1/2"	MB10212	39-9A053-080-212

NPT Guidelines

Cable Range	NPT
.312 - .625	1/2"
.438 - .812	3/4"
.660 - 1.000	1"
.875 - 1.375	1 1/4"
.890 - 1.812	1 1/2"
1.190 - 2.438	2"
2.062 - 2.438	2 1/2"

NPT sizes are determined by the cable diameter and third party cord grip.

Miscellaneous Accessories



Protective Neoprene Cap	Cord Grip with Mesh	Receptacle ⁺ Lockout Pin
DN63R	see pgs 169-170	LP-843

⁺ Requires Padlockable Pawl option (-843) on receptacle.

Order Example

A typical order should include an inlet part number, a receptacle part number **AND** the matching handles, angles or other required accessories.



Male Inlet with Handle (Plug)
17-68200 + 65-9A013-D25



Female Receptacle with Angle Adapter
17-64200 + MA10