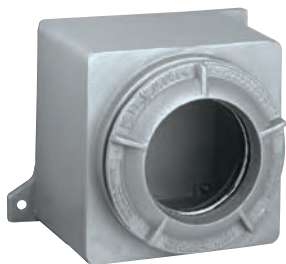




Box with blank cover



Box with lens cover



Box with dome cover

NOTE: See Page E23 for Third Party Certifications

FEATURES-SPECIFICATIONS

GR COMPLETE ASSEMBLIES									
COVER OPENING DIAMETER	NOMINAL EXTERNAL BOX DIMENSIONS WITHOUT COVER			CATALOG NUMBER		VIEWING AREA	CATALOG NUMBER	DEPTH OF DOME	MAXIMUM CONDUIT SIZE
				BOX WITH BLANK COVER	BOX WITH LENS COVER		BOX WITH DOME COVER		
	L	W	D						
3-29/32"	4-5/8"	4-5/8"	4-5/32"	GRB	GRB-275L	2-3/4"	2GRB 4GRB	2" 4"	1-1/2"
4-11/32"	6-5/8"	5-1/2"	5-1/4"	GRE	GRE-300L	3"	—	—	2"
5-9/32"	6-7/8"	6-7/8"	5-15/16"	GRM	GRM-375L	3-3/4"	3GRM 5GRM	3" 5"	2"
7-1/4"	9-7/8"	8-3/8"	6-17/32"	GRK	GRK-537L	5-3/8"	4GRK	4"	2-1/2"
7-7/8"	10-1/2"	8-7/8"	7-3/16"	GRL	GRL-600L	6"	—	—	2"
9-5/8"	12"	11"	7-5/8"	GRH	GRH-775L	7-3/4"	4GRH 8GRH	4" 8"	4"
9-5/8"	12-3/16"	11"	11"	GRHC	GRHC-775L	7-3/4"	4GRHC 8GRHC	4" 8"	4"
9-5/8"	12"	11"	16-3/16"	GRHA	GRHA-775L	7-3/4"	4GRHA 8GRHA	4" 8"	4"

NOTE: To order above items with CENELEC Modifications and Certifications add suffix CEN to end of catalog number. (Example: GRBCEN)
To order above items with a flat back pan installed add suffix P to catalog number.



GR COMPONENT PARTS							
ENCLOSURE SERIES	CATALOG NUMBER OF COMPONENTS						
	BOX WITHOUT COVER	BLANK COVER	LENS COVER	DOME COVER	GASKET REPLACEMENT	FLAT PAN	DIMENSIONS FOR MTG. PANS
GRB	GRBB	GRB-BC	GL-275	2"- 2GRBD 4"- 4GRBD	GRB-RG	6086PAN	3.5" x 3.5"
GRE	GREB	GRE-BC	GL-300	—	GRE-RG	6074	4" x 4.5"
GRM	GRMB	GRM-BC	GL-375	3"- 3GRMD 5"- 5GRMD	GRM-RG	6064	5" x 5"
GRK	GRKB	GRK-BC	GL-537	4"- 4GRKD	GRK-RG	6038	5.5" x 7.5"
GRL	GRLB	GRL-BC	GL-600	—	GRL-RG	6053	6" x 8.5"
GRH	GRHB	GRH-BC	GL-775	4"- 4GRHD 8"- 8GRHD	GRH-RG	6058	8" x 9"
GRHC	GRHCB	GRH-BC	GL-775	4"- 4GRHD 8"- 8GRHD	GRH-RG	6058	
GRHA	GRHAB	GRH-BC	GL-775	4"- 4GRHD 8"- 8GRHD	GRH-RG	6058	

NOTES: Covers are supplied with gasket.
For Group B locations all conduits must be sealed within 18" of enclosures.