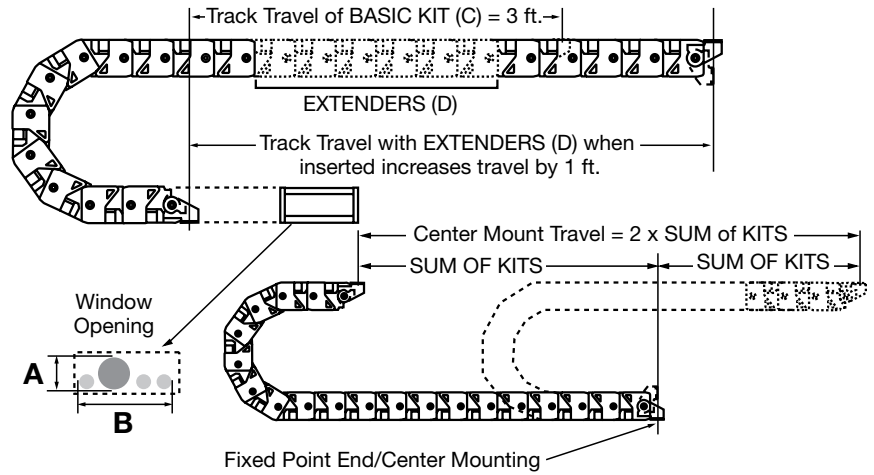


Industrial Connectivity and Control Products

CableTrak® Accessories

Center Mounting: Mounting the fixed track end in the center of the machine travel allows the track to travel beyond the fixed end. Center mounting effectively doubles the travel distance of the track requiring half the track length of an end mounted application.



Calculating

Center Mount (Stationary bracket mounted in center of travel range): $\text{Track Length} = (\text{MT}/2) + L$

End Mount (Stationary bracket mounted off center of travel range): $\text{Track Length} = (\text{MT}/2) + L + \text{offset from center in feet}$

MT = Total machine travel distance in feet

L = Length of track taken up by the bend radius

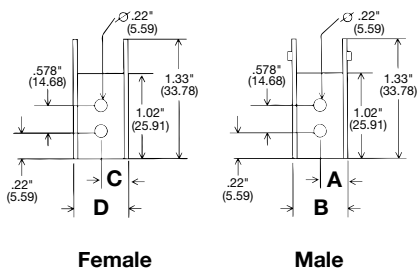
Customizing Track Length

Hubbell CableTrak is easily customized by adding or subtracting links to the track. CableTrak kits provide 4 to 5 feet of track with brackets pre-installed. Track length can be increased by installing the required number of extenders to reach the required length. To further tune the length of track, individual links can be added or removed. To determine the number of links to add or remove, divide the length in inches to be added or subtracted by the pitch of the track and round up.

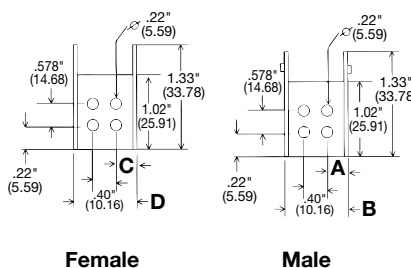
CableTrak® Accessories

Bracket Kits	For Use With	A	B	C	D	E	F	G	H
HCTBK101	HCT101 Series	.40" (10.2)	.81" (20.6)	.47" (12.0)	.94" (23.9)	–	–	–	–
HCTBK102	HCT102 Series	.44" (11.2)	1.22" (31.0)	.44" (11.2)	1.35" (34.3)	–	–	–	–
HCTBK161	HCT161 Series	.99" (25.2)	1.97" (50.1)	.87" (22.1)	1.84" (46.7)	1.19" (30.2)	.281" (7.1)	.75" (19.1)	.81" (20.6)
HCTBK162	HCT162 Series	1.78" (45.2)	2.75" (69.9)	1.65" (41.9)	2.63" (66.8)	1.19" (30.2)	.281" (7.1)	.75" (19.1)	.81" (20.6)
HCTBK163	HCT163 Series	2.57" (65.3)	3.55" (90.2)	2.44" (62.0)	3.42" (86.9)	1.19" (30.2)	.281" (7.1)	.75" (19.1)	.81" (20.6)
HCTBK164	HCT164 Series	3.56" (90.4)	4.53" (115.1)	3.47" (88.1)	4.41" (112.0)	1.19" (30.2)	.281" (7.1)	.75" (19.1)	.81" (20.6)
HCTBK251	HCT251 Series	2.08" (52.8)	3.21" (81.5)	1.80" (45.7)	3.03" (77.0)	1.75" (44.5)	.344" (8.7)	1.00" (25.4)	1.25" (31.8)
HCTBK252	HCT252 Series	3.74" (95.0)	4.87" (123.7)	3.46" (87.9)	4.69" (119.1)	1.75" (44.5)	.344" (8.7)	1.00" (25.4)	1.25" (31.8)
HCTBK253	HCT253 Series	6.08" (154.4)	7.21" (183.1)	5.80" (147.3)	7.03" (178.6)	1.75" (44.5)	.344" (8.7)	1.00" (25.4)	1.25" (31.8)
Separators	For Use With	A	B	C	D	E	F		
HCTSP16PK12	HCT16 Series	1.24" (31.5)	.82" (20.8)	.94" (23.9)	.27" (6.9)	.14" (3.6)	.50" (12.7)		
HCTSP25PK12	HCT25 Series	2.03" (51.6)	1.00" (25.4)	1.19" (30.2)	.35" (8.9)	.15" (3.8)	.62" (15.8)		

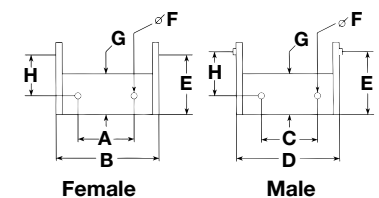
HCTBK101 – Brackets



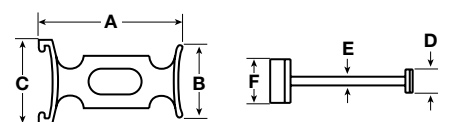
HCTBK102 – Brackets



HCTBK161 – HCTGK253 Brackets



Separators



Dimensions in Inches (mm)