

CES and CESD Factory Sealed 30 and 60 Amp Pin and Sleeve Receptacles

Explosionproof

Delayed-Action Safety Construction with Slide-Lok® Design. Pressure Wire Terminals.

*NEC/CEC — 30 Amp CES and CESD:
Class I, Division 1 and 2, Groups C, D*

*NEC/CEC — 60 Amp CESD:
Class I, Division 1 and 2, Groups D*

Applications

- Locations where receptacles are used with stationary or portable electrically operated devices such as:
 - Lighting systems
 - Conveyors
 - Heaters
 - Motor-generator sets
 - Air conditioners
 - Compressors
 - Pumps
- Class I: classified locations such as:
 - Petrochemical plants
 - Petroleum refineries
 - Paint and chemical plants
 - Any location where ignitable vapors or gases are present

Features

- Factory sealed. No external seals required. Arcing is safely confined to receptacle interior.
- Energized receptacle contacts deeply recessed to reduce danger of accidental touching.
- Style 2 (shell and extra pole) grounding.
- Spring door keeps dust out of receptacle when plug is not in use.
- Unique design brass contacts exert constant pressure along entire contact surface and provide superior electrical contact.
- Contacts have beryllium copper wire springs.
- Plug mechanical cable clamps prevent strain on cables; they meet or exceed UL strain relief pull-out requirements.
- Neoprene bushing compressed by cable collar prevents entrance of water.
- Insulators provide superior dielectric and mechanical strength and lowest arc tracking.
- Smooth, rounded integral bushing in each hub protects conductor insulation.
- Delayed action construction. To operate, insert plug to first stop, move Slide-Lok® slide to right and push plug fully forward.
- CPH plug fits Powertite® Series hazardous location receptacles.

Standard Materials

- Receptacle and cover: copperfree (4/10 of 1% max.) aluminum
- Mounting box: malleable iron
- Insulating blocks: fiber glass reinforced polyester

Standard Finishes

- Malleable iron mounting bodies: triple-coat (1) zinc electroplate, (2) chromate and (3) epoxy powder coat
- Aluminum receptacles: ceramic burnished
- Cord connector housings and caps: epoxy powder coat

NEC/CEC Certifications and Compliances

- UL Standard: UL 1010 (UL 1203), UL 894, UL 1682, UL 1686
- UL Listed: E10784
- CSA Standard: C22. No 30, C22.2 No. 159, C22.2 No 182.1



Plugs and Receptacles

NEC/CEC CLASS/ZONE RATED HAZARDOUS LOCATION PLUGS AND RECEPTACLES

CES and CESD Factory Sealed 30 and 60 Amp Pin and Sleeve Receptacles

Explosionproof

Delayed-Action Safety Construction with Slide-Lok® Design. Pressure Wire Terminals.

NEC/CEC — 30 Amp CES and CESD:
Class I, Division 1 and 2, Groups C, D

NEC/CEC — 60 Amp CESD:
Class I, Division 1 and 2, Groups D

Amp	Wire/Pole	Hub Size (Inches)	Complete With Box ①	Catalog Number		
				Back Box Only	Receptacle Only ②	Replacement Interior

CES Receptacles — 30 Amp and 60 Amp, 125-250 Vac (See HP ratings below.)

Furnished with one vertical and two horizontal feed-thru hubs.



CES



CESR

30	2W, 3P	3/4	CES-3023	CES30B	CESR-3023	CERI-3023
	3W, 4P	3/4	CES-3034	CES30B	CESR-3034	CERI-3034
60	2W, 3P	1-1/4	CES-6023	CES60B	CESR-6023	CERI-6023
	3W, 4P	1-1/4	CES-6034	CES60B	CESR-6034	CERI-6034

CESD Receptacles — 30 Amp and 60 Amp, 125-250 Vac (See HP ratings below.)

Furnished with vertical feed-thru hubs.



CESD



CESR

30	2W, 3P	3/4	CESD-3023	CESD30B	CESR-3023	CERI-3023
	3W, 4P	3/4	CESD-3034	CESD30B	CESR-3034	CERI-3034
60	2W, 3P	1-1/4	CESD-6023	CESD60B	CESR-6023	CERI-6023
	3W, 4P	1-1/4	CESD-6034	CESD60B	CESR-6034	CERI-6034

CPH Plugs and Plug Interiors for Use with Receptacles Above

Type	Wire/Pole	Cable Dia. (Inches)	Complete Plug	Replacement Interior
30	2W, 3P	.390-1.375	CPH-3023BC	CEPI-3023B
	3W, 4P	.390-1.375	CPH-3034BC	CEPI-3034B
60	2W, 3P	.390-1.375	CPH-6023BC	CEPI-6023BC
	3W, 4P	.390-1.375	CPH-6034BC	CEPI-6034BC



CPH Plug
(30 and 60 Amp)
Pressure Terminals



Interior

CES/CESD Maximum Horsepower Ratings

125-250 Vac					480 Vac				
Wire/Pole	Phase	Max. HP	Max. Amp	Catalog Number	Wire/Pole	Phase	Max. HP	Max. Amp	Catalog Number
2W, 3P	1	1-1/2	30	CES/CESD-3023	2W, 3P	1	1/2	7	CES/CESD-3023
3W, 4P	3	3	30	CES/CESD-3034	3W, 4P	3	1	7	CES/CESD-3034
2W, 3P	1	1-1/2	60	CES/CESD-6023	2W, 3P	1	1-1/2	30	CES/CESD-6023
3W, 4P	3	5	60	CES/CESD-6034	3W, 4P	3	5	30	CES/CESD-6034

① UL Listed with Mounting Box.

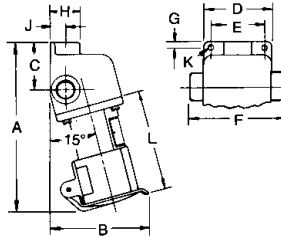
② NOT UL Listed. Only UL Listed when Receptacle is provided with Mounting Box.

CES and CESD Factory Sealed 30 and 60 Amp Pin and Sleeve Receptacle Dimensions

Factory Sealed, Explosionproof

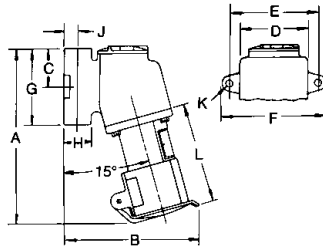
Delayed-Action Safety Construction with Slide-Lok® Design. Pressure Wire Terminals.

CES Receptacles



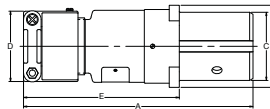
Hub Size (Inches)	Max. Amp	Dimensions in Millimeters (Inches)										
		A	B	C	D	E	F	G	H	J	K	L
3/4	30	211.0 (8.31)	125.4 (4.94)	60.4 (2.38)	85.8 (3.38)	66.8 (2.63)	119.1 (4.69)	7.8 (0.31)	38.1 (1.50)	19.8 (0.78)	4/1 ϕ	128.7 (5.07)
1-1/4	60	301.7 (11.88)	174.7 (6.88)	73.1 (2.88)	133.3 (5.25)	111.2 (4.38)	185.6 (7.31)	11.1 (0.44)	65.0 (2.56)	35.0 (1.38)	32/13 ϕ	180.3 (7.10)

CESD Receptacles



Hub Size (Inches)	Max. Amp	Dimensions in Millimeters (Inches)										
		A	B	C	D	E	F	G	H	J	K	L
3/4	30	220.7 (8.69)	171.4 (6.75)	47.7 (1.88)	85.8 (3.38)	111.2 (4.38)	130.3 (5.13)	95.2 (3.75)	35.0 (1.38)	17.5 (0.69)	32/11 ϕ	128.7 (5.07)
1-1/4	60	323.8 (12.75)	236.4 (9.31)	81.0 (3.19)	133.3 (5.25)	158.7 (6.25)	184.1 (7.25)	160.2 (6.31)	65.0 (2.56)	35.0 (1.38)	32/11 ϕ	180.3 (7.10)

CPH Plugs



Max. Amp	Wire/Pole	Dimensions in Millimeters (Inches)				
		A	B	C	D	E
30	2W, 3P; 3W, 4P	155.7 (6.13)	60.4 (2.38)	47.2 (1.86)	6.68 (2.63)	113.7 (4.44)
60	2W, 3P	123.9 (8.44)	77.7 (3.06)	56.6 (2.23)	6.68 (2.63)	144.5 (5.69)
60	3W, 4P	123.9 (8.44)	77.7 (3.06)	64.7 (2.55)	6.68 (2.63)	144.5 (5.69)